

## GOLGA2 RABBIT PAB

货号: S217489

产品全名: GOLGA2 兔多抗

基因符号: GM130

**UNIPROT ID:** Q08379 (Gene Accession - BC014188)

**背景:** The Golgi apparatus, which participates in glycosylation and transport of proteins and lipids in the secretory pathway, consists of a series of stacked cisternae (flattened membrane sacs). Interactions between the Golgi and microtubules are thought to be important for the reorganization of the Golgi after it fragments during mitosis. This gene encodes one of the golgins, a family of proteins localized to the Golgi. This encoded protein has been postulated to play roles in the stacking of Golgi cisternae and in vesicular transport. Several alternatively spliced transcript variants of this gene have been described, but the full-length nature of these variants has not been determined.

**抗原:** Fusion protein of human GOLGA2

**经过测试的应用:** ELISA, WB, IHC

**推荐稀释比:** IHC: 100-300;WB: 500-2000;ELISA: 2000-5000

**种属反应性:** Rabbit

**克隆性:** Rabbit Polyclonal

**亚型:** Immunogen-specific rabbit IgG

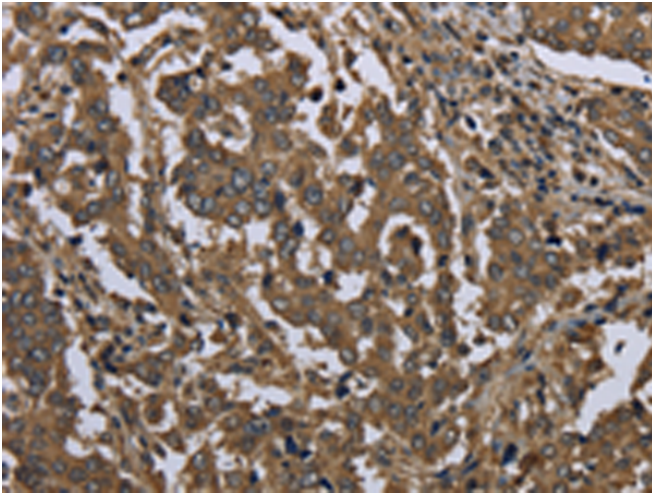
**纯化:** Antigen affinity purification

**种属反应性:** Human

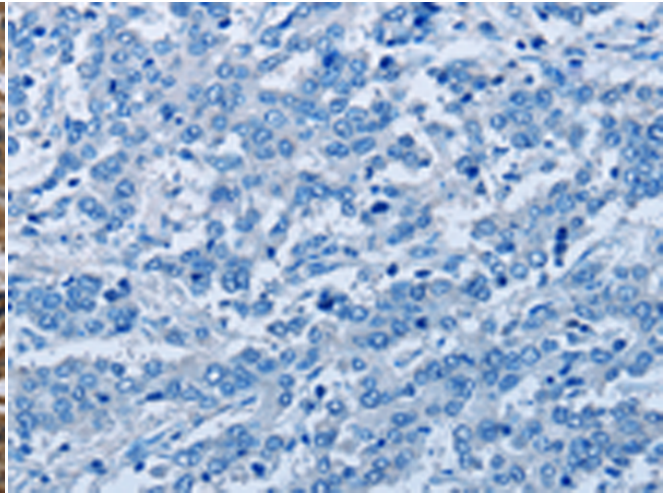
**成分:** PBS (without Mg<sup>2+</sup> and Ca<sup>2+</sup>), pH 7.4, 150 mM NaCl, 0.05% Sodium Azide and 40% glycerol

**研究领域:** Signal Transduction

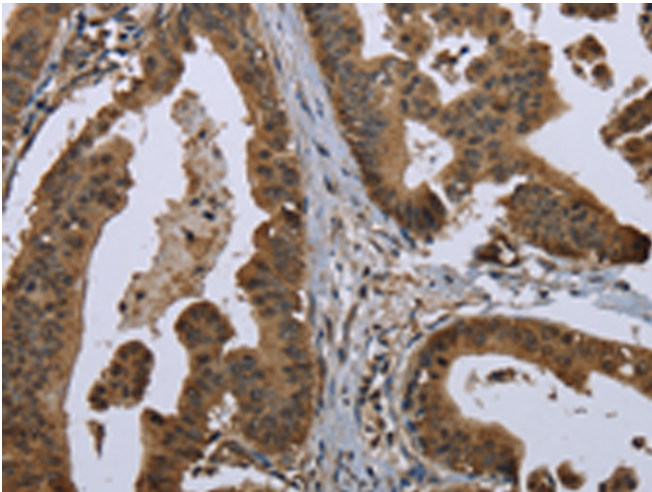
**储存和运输:** Store at -20°C. Avoid repeated freezing and thawing



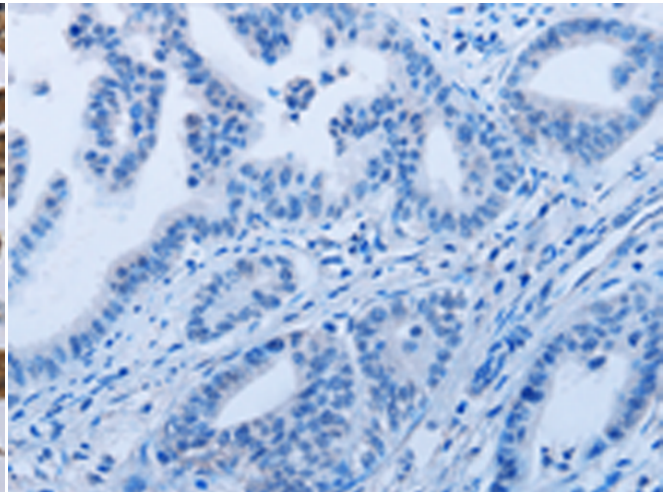
Immunohistochemistry analysis of paraffin embedded Human liver cancer tissue using 217489(GOLGA2 Antibody) at a dilution of 1/60(Cytoplasm or Nucleus).



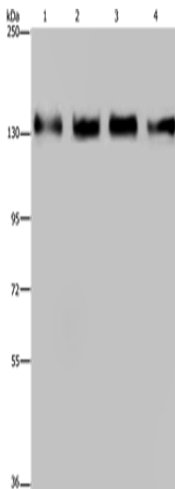
In comparison with the IHC on the left, the same paraffin-embedded Human liver cancer tissue is first treated with the fusion protein and then with 217489(Anti-GOLGA2 Antibody) at dilution 1/60.



The image on the left is immunohistochemistry of paraffin-embedded Human gastric cancer tissue using 217489(Anti-GOLGA2 Antibody) at a dilution of 1/60.



In comparison with the IHC on the left, the same paraffin-embedded Human gastric cancer tissue is first treated with fusion protein and then with D222434(Anti-GOLGA2 Antibody) at dilution 1/60.



Gel: 6%SDS-PAGE, Lysate: 40 µg;  
Lane 1-4: 293T cells, HeLa cells, A172 cells, A549 cells;  
Primary antibody: 217489(GOLGA2 Antibody) at dilution 1/300;  
Secondary antibody: Goat anti rabbit IgG at 1/8000 dilution;  
Exposure time: 10 seconds



# Product Description

Pioneering GTPase and Oncogene Product Development since 2010

---