

GNLY RABBIT PAB

货号: S221342

产品全名: GNLY 兔多抗

基因符号: LAG2; NKG5; LAG-2; D2S69E; TLA519

UNIPROT ID: P22749 (Gene Accession - NP_006424)

背景: The product of this gene is a member of the saposin-like protein (SAPLIP) family and is located in the cytotoxic granules of T cells, which are released upon antigen stimulation. This protein is present in cytotoxic granules of cytotoxic T lymphocytes and natural killer cells, and it has antimicrobial activity against *M. tuberculosis* and other organisms. Alternatively spliced transcript variants encoding different isoforms have been identified.

抗原: Synthetic peptide of human GNLY

经过测试的应用: ELISA, IHC

推荐稀释比: IHC: 25-100; ELISA: 5000-10000

种属反应性: Rabbit

克隆性: Rabbit Polyclonal

亚型: Immunogen-specific rabbit IgG

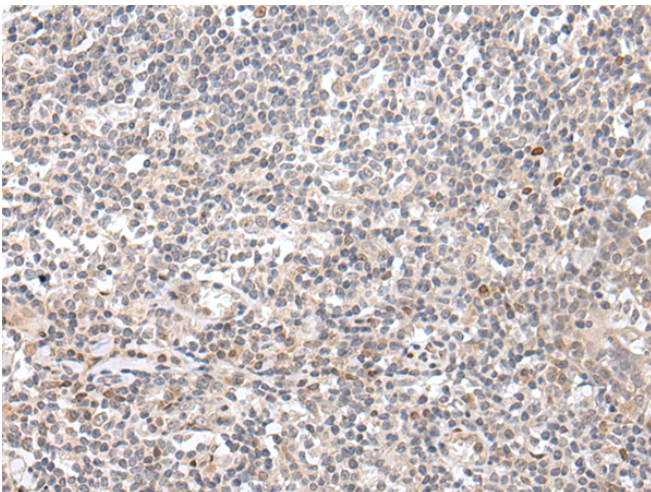
纯化: Antigen affinity purification

种属反应性: Human

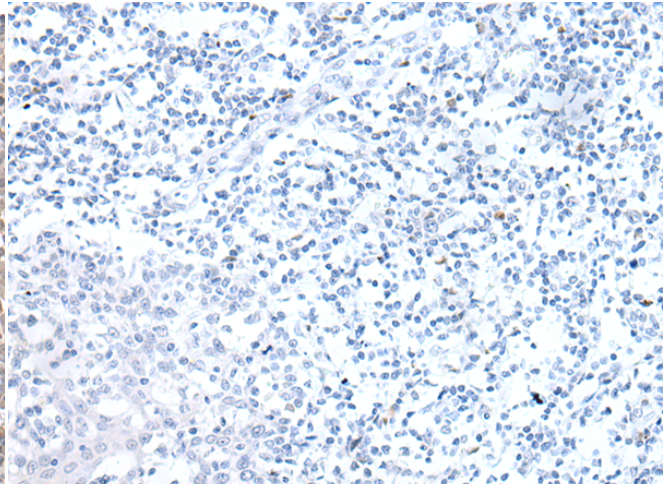
成分: PBS (without Mg²⁺ and Ca²⁺), pH 7.4, 150 mM NaCl, 0.05% Sodium Azide and 40% glycerol

研究领域: Immunology

储存和运输: Store at -20°C. Avoid repeated freezing and thawing



Immunohistochemistry analysis of paraffin embedded Human tonsil tissue using 221342 (GNLY Antibody) at a dilution of 1/20 (Secreted).



In comparison with the IHC on the left, the same paraffin-embedded Human tonsil tissue is first treated with the synthetic peptide and then with 221342 (Anti-GNLY Antibody) at dilution 1/20.