

GNE RABBIT MAB

货号: N262276

产品全名: GNE 兔单克隆抗体

基因符号 NM; DMRV; IBM2; Uae1; GLCNE

UNIPROT ID: Q9Y223

背景: Regulates and initiates biosynthesis of N-acetylneuraminic acid (NeuAc), a precursor of sialic acids. Plays an essential role in early development. Required for normal sialylation in hematopoietic cells. Sialylation is implicated in cell adhesion, signal transduction, tumorigenicity and metastatic behavior of malignant cells.

抗原: A synthetic peptide of human GLCNE

经过测试的应用: WB,IP

推荐稀释比: WB: 1/500-1/1000 IP: 1/20

种属反应性: Rabbit

克隆性: Rabbit Monoclonal

克隆编号: R05-7A8

分子量: Calculated MW: 79 kDa; Observed MW: 75 kDa

亚型: IgG

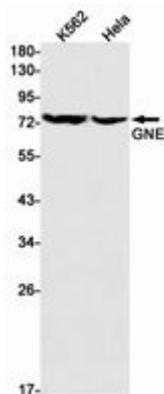
纯化: Affinity Purified

种属反应性: Human

成分: PBS (without Mg²⁺ and Ca²⁺), pH 7.3 containing 50% glycerol, 0.5% BSA and 0.02% sodium azide

研究领域: Cardiovascular

储存和运输: Store at -20°C. Avoid repeated freezing and thawing



Western blot analysis of GNE in K562, HeLa lysates using GNE antibody.



Product Description

Pioneering GTPase and Oncogene Product Development since 2010
