

## GNAI2 RABBIT PAB

货号: S221338

产品全名: GNAI2 兔多抗

基因符号: GIP; GNAI2B; H\_LUCA15.1; H\_LUCA16.1

**UNIPROT ID:** P04899 (Gene Accession - NP\_002061)

**背景:** The protein encoded by this gene is an alpha subunit of guanine nucleotide binding proteins (G proteins). The encoded protein contains the guanine nucleotide binding site and is involved in the hormonal regulation of adenylate cyclase. Several transcript variants encoding different isoforms have been found for this gene.

**抗原:** Synthetic peptide of human GNAI2

**经过测试的应用:** ELISA, WB, IHC

**推荐稀释比:** IHC: 25-100;WB: 500-2000;ELISA: 5000-10000

**种属反应性:** Rabbit

**克隆性:** Rabbit Polyclonal

**亚型:** Immunogen-specific rabbit IgG

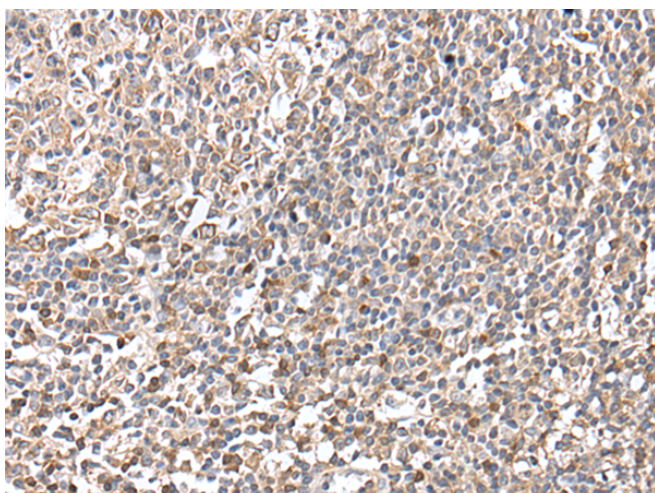
**纯化:** Antigen affinity purification

**种属反应性:** Human, Mouse, Rat

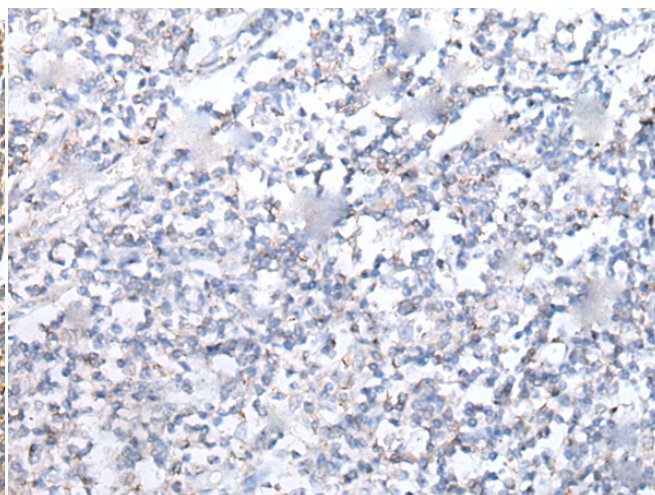
**成分:** PBS (without Mg<sup>2+</sup> and Ca<sup>2+</sup>), pH 7.4, 150 mM NaCl, 0.05% Sodium Azide and 40% glycerol

**研究领域:** Signal Transduction

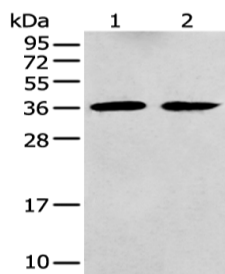
**储存和运输:** Store at -20°C. Avoid repeated freezing and thawing



Immunohistochemistry analysis of paraffin embedded Human tonsil tissue using 221338 (GNAI2 Antibody) at a dilution of 1/25 (Cytoplasm).



In comparison with the IHC on the left, the same paraffin-embedded Human tonsil tissue is first treated with the synthetic peptide and then with 221338 (Anti-GNAI2 Antibody) at dilution 1/25.



Gel: 12% SDS-PAGE, Lysate: 40 µg;

Lane 1-2: Mouse brain tissue and Human fetal brain tissue;

Primary antibody: 221338 (GNAI2 Antibody) at dilution 1/400;

Secondary antibody: Goat anti rabbit IgG at 1/8000 dilution;

Exposure time: 10 seconds