

GMPPB RABBIT PAB

货号: S219082

产品全名: GMPPB 兔多抗

基因符号 MDDGA14; MDDGB14; MDDGC14

UNIPROT ID: Q9Y5P6 (Gene Accession - BC001141)

背景: This gene is thought to encode a GDP-mannose pyrophosphorylase. The encoded protein catalyzes the conversion of mannose-1-phosphate and GTP to GDP-mannose, a reaction involved in the production of N-linked oligosaccharides. Alternatively spliced transcript variants encoding distinct isoforms have been described.

抗原: Fusion protein of human GMPPB

经过测试的应用: ELISA, WB, IHC

推荐稀释比: IHC: 50-300;WB: 500-2000;ELISA: 5000-10000

种属反应性: Rabbit

克隆性: Rabbit Polyclonal

亚型: Immunogen-specific rabbit IgG

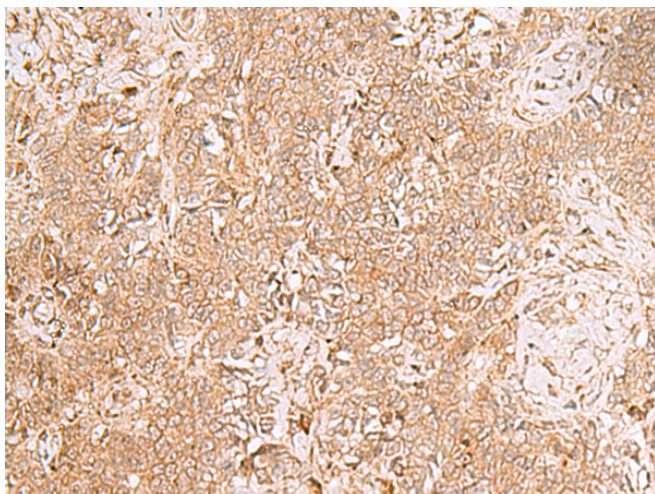
纯化: Antigen affinity purification

种属反应性: Human, Mouse

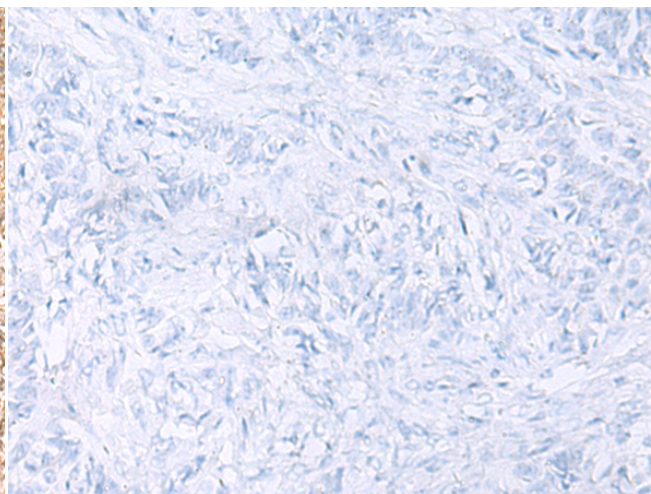
成分: PBS (without Mg²⁺ and Ca²⁺), pH 7.4, 150 mM NaCl, 0.05% Sodium Azide and 40% glycerol

研究领域: Metabolism

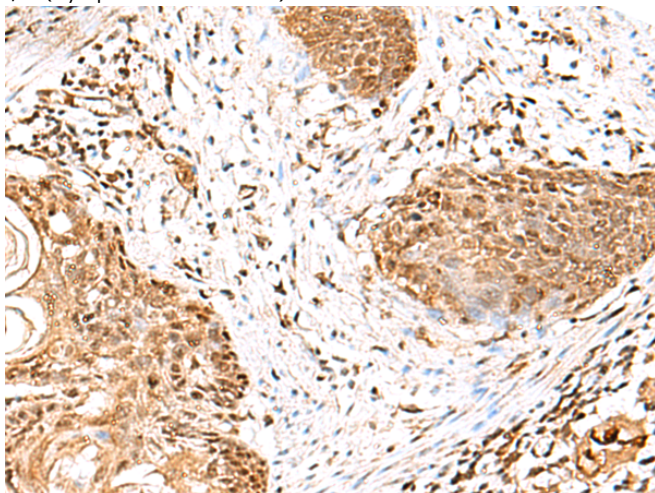
储存和运输: Store at -20°C. Avoid repeated freezing and thawing



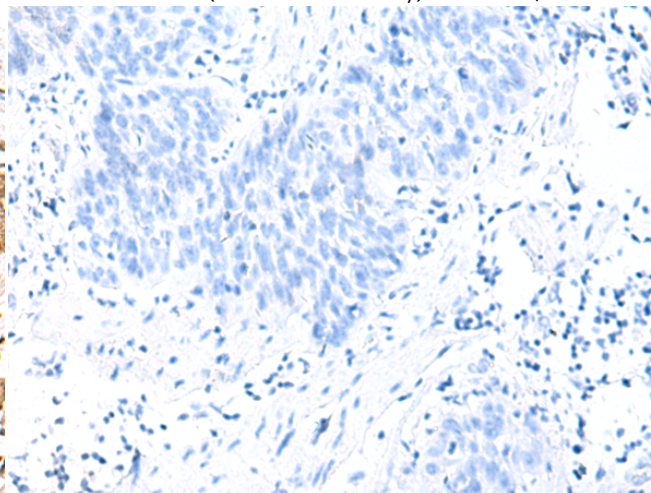
Immunohistochemistry analysis of paraffin embedded Human ovarian cancer tissue using 219082(GMPPB Antibody) at a dilution of 1/50(Cytoplasm and Nucleus).



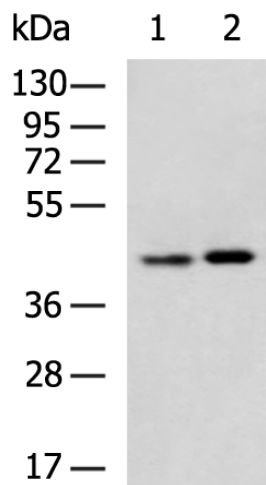
In comparison with the IHC on the left, the same paraffin-embedded Human ovarian cancer tissue is first treated with the fusion protein and then with 219082(Anti-GMPPB Antibody) at dilution 1/50.



The image on the left is immunohistochemistry of paraffin-embedded Human esophagus cancer tissue using 219082(Anti-GMPPB Antibody) at a dilution of 1/50.



In comparison with the IHC on the left, the same paraffin-embedded Human esophagus cancer tissue is first treated with fusion protein and then with D225795(Anti-GMPPB Antibody) at dilution 1/50.



Gel: 8%SDS-PAGE, Lysate: 40 µg;
 Lane 1-2: Human cerebella tissue, Human cerebrum tissue lysates;
 Primary antibody: 219082(GMPPB Antibody) at dilution 1/800;
 Secondary antibody: HRP-conjugated Goat anti rabbit IgG at 1/5000 dilution;
 Exposure time: 20 seconds



Product Description

Pioneering GTPase and Oncogene Product Development since 2010
