

GMFG RABBIT PAB

货号: S210890

产品全名: GMFG 兔多抗

基因符号: GMF-GAMMA

UNIPROT ID: O60234 (Gene Accession - BC080180)

背景: Glia maturation factor, gamma, also known as GMFG, is a 142 amino acid protein that belongs to the GMF subfamily of the larger actin-binding protein ADF family. GMF-gamma is expressed predominantly in lung, heart and placenta. GMF-gamma is considered a candidate regulatory growth factor protein, mediating both paracrine and autocrine cell-cell interactions. GMF-gamma is phosphorylated at N-terminal serine, and its phosphorylation is enhanced by coexpression of dominant active Rac 1 and Cdc42. GMF-gamma expression is significantly increased in a cardiac ischemia/reperfusion model where inflammation and angiogenesis take place actively. As a regulator of actin-based cellular functions, GMF-gamma may provide a novel approach to modulate the pathophysiology of cardiovascular diseases. GMF-gamma is primarily found in proliferative and differentiative organs.

抗原: Fusion protein of human GMFG

经过测试的应用: ELISA, WB, IHC

推荐稀释比: IHC: 50-200;WB: 500-2000;ELISA: 2000-5000

种属反应性: Rabbit

克隆性: Rabbit Polyclonal

亚型: Immunogen-specific rabbit IgG

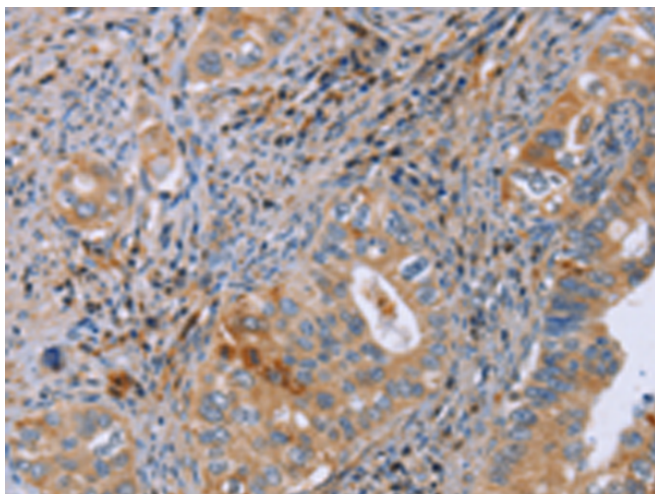
纯化: Antigen affinity purification

种属反应性: Human, Mouse, Rat

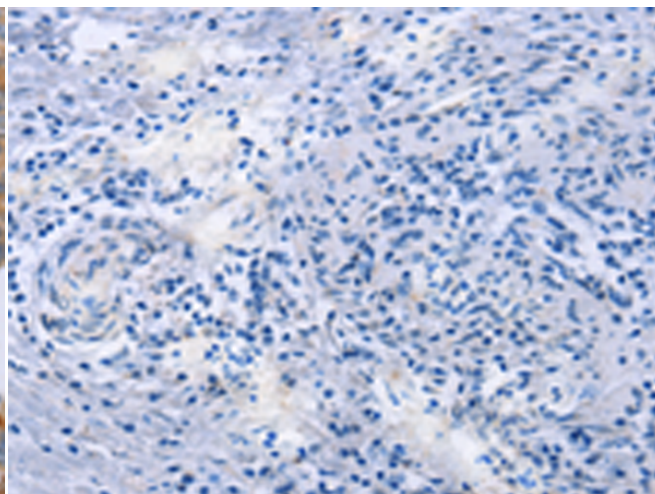
成分: PBS (without Mg²⁺ and Ca²⁺), pH 7.4, 150 mM NaCl, 0.05% Sodium Azide and 40% glycerol

研究领域: Signal Transduction

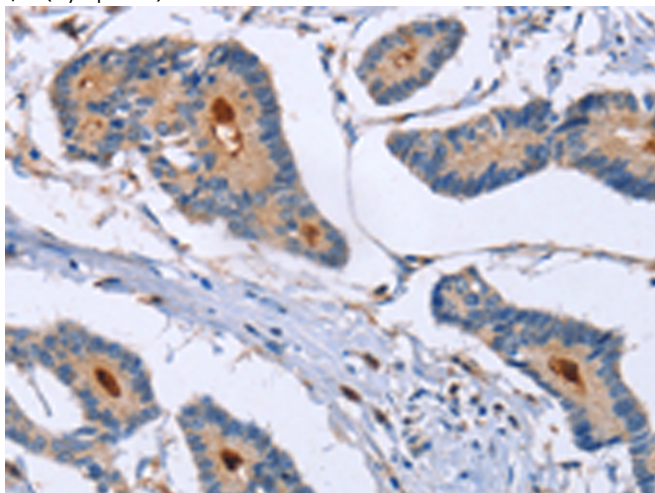
储存和运输: Store at -20°C. Avoid repeated freezing and thawing



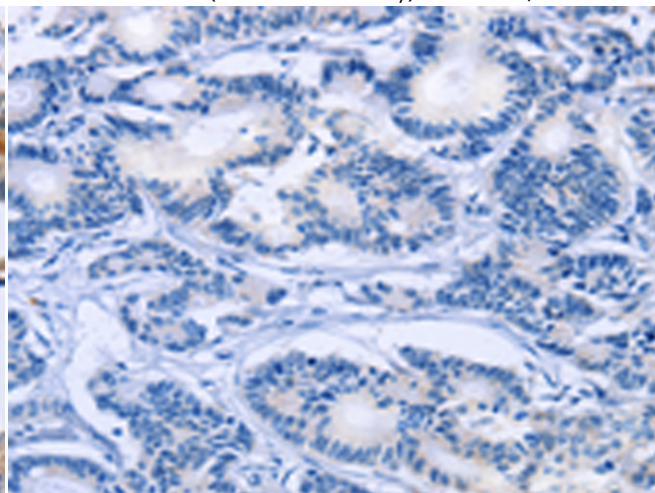
Immunohistochemistry analysis of paraffin embedded Human cervical cancer tissue using 210890(GMFG Antibody) at a dilution of 1/50(Cytoplasm).



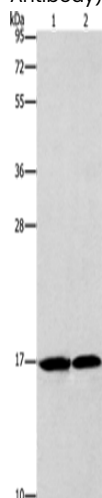
In comparison with the IHC on the left, the same paraffin-embedded Human cervical cancer tissue is first treated with the fusion protein and then with 210890(Anti-GMFG Antibody) at dilution 1/50.



The image on the left is immunohistochemistry of paraffin-embedded Human colon cancer tissue using 210890(Anti-GMFG Antibody) at a dilution of 1/50.



In comparison with the IHC on the left, the same paraffin-embedded Human colon cancer tissue is first treated with fusion protein and then with D121824(Anti-GMFG Antibody) at dilution 1/50.



Gel: 10%SDS-PAGE, Lysate: 40 µg;
Lane 1-2: Mouse heart tissue, human fetal brain tissue;
Primary antibody: 210890(GMFG Antibody) at dilution 1/1142;
Secondary antibody: Goat anti rabbit IgG at 1/8000 dilution;
Exposure time: 10 seconds



Product Description

Pioneering GTPase and Oncogene Product Development since 2010
