

## GMFB RABBIT PAB

货号: S222458

产品全名: GMFB 兔多抗

基因符号: GMF

**UNIPROT ID:** P60983 (Gene Accession - NP\_004115)

**背景:** Predicted to enable Arp2/3 complex binding activity. Predicted to be involved in actin filament debranching and negative regulation of Arp2/3 complex-mediated actin nucleation. Predicted to act upstream of or within learning and locomotory behavior.

**抗原:** Synthetic peptide of human GMFB

**经过测试的应用:** ELISA, IHC

**推荐稀释比:** IHC: 50-100; ELISA: 5000-10000

**种属反应性:** Rabbit

**克隆性:** Rabbit Polyclonal

**亚型:** Immunogen-specific rabbit IgG

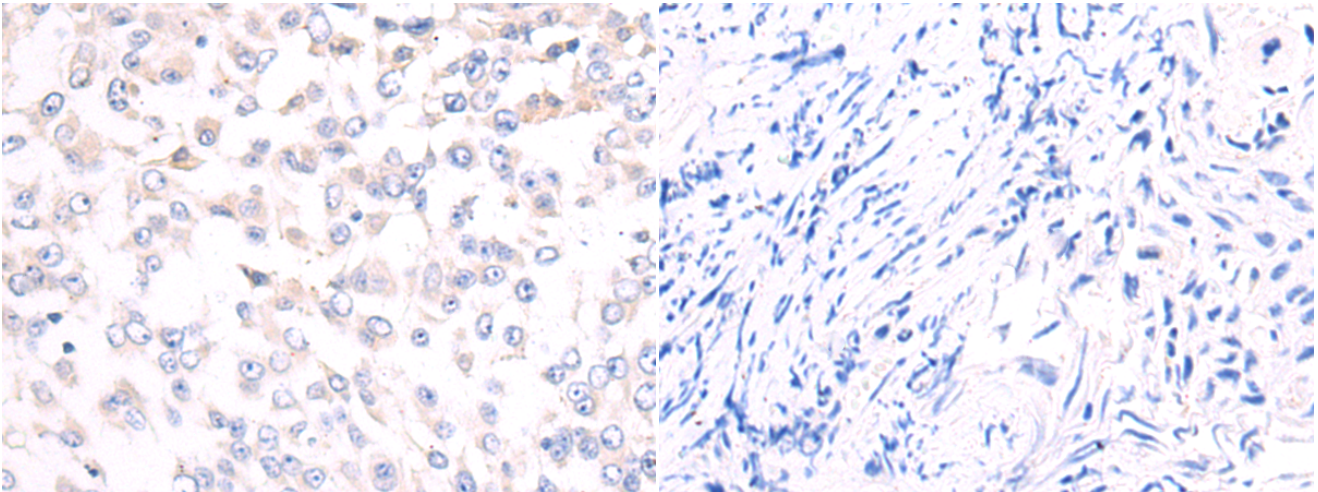
**纯化:** Antigen affinity purification

**种属反应性:** Human, Mouse, Rat

**成分:** PBS (without Mg<sup>2+</sup> and Ca<sup>2+</sup>), pH 7.4, 150 mM NaCl, 0.05% Sodium Azide and 40% glycerol

**研究领域:** Neuroscience

**储存和运输:** Store at -20°C. Avoid repeated freezing and thawing



Immunohistochemistry analysis of paraffin embedded Human bladder cancer tissue using 222458(GMFB Antibody) at a dilution of 1/50(Cytoplasm).

In comparison with the IHC on the left, the same paraffin-embedded Human bladder cancer tissue is first treated with the synthetic peptide and then with 222458(Anti-GMFB Antibody) at dilution 1/50.