

GMEB1 RABBIT MAB

货号: N263348

产品全名: GMEB1 兔单克隆抗体

基因符号 PIF96; P96PIF

UNIPROT ID: Q9Y692

背景: Trans-acting factor that binds to glucocorticoid modulatory elements (GME) present in the TAT (tyrosine aminotransferase) promoter and increases sensitivity to low concentrations of glucocorticoids.

抗原: Recombinant protein of human GMEB1

经过测试的应用: WB,IP

推荐稀释比: WB: 1/500-1/1000 IP: 1/20

种属反应性: Rabbit

克隆性: Rabbit Monoclonal

克隆编号: R02-410

分子量: Calculated MW: 63 kDa; Observed MW: 80 kDa

亚型: IgG

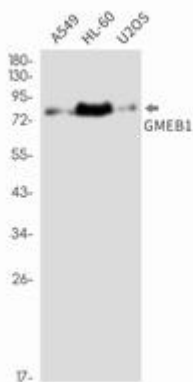
纯化: Affinity Purified

种属反应性: Human

成分: PBS (without Mg²⁺ and Ca²⁺), pH 7.3 containing 50% glycerol, 0.5% BSA and 0.02% sodium azide

研究领域: -

储存和运输: Store at -20°C. Avoid repeated freezing and thawing



Western blot analysis of GMEB1 in A549, HL-60, U2OS lysates using GMEB1 antibody.