

GLYCOPHORIN C RABBIT PAB

货号: N225974

产品全名: Glycophorin C 兔多抗

基因符号 GYPC; CD236; CD236R; GE; GPC; GYPD

UNIPROT ID: P04921

背景: This protein is a minor sialoglycoprotein in human erythrocyte membranes. The blood group Gerbich antigens and receptors for Plasmodium falciparum merozoites are most likely located within the extracellular domain.

抗原: A synthesized peptide derived from human Glycophorin C

经过测试的应用: WB,IHC-P,ICC/IF,IP,FC

推荐稀释比: WB: 1/500-1/1000 IHC: 1/50-1/100 IF: 1/50-1/200 IP: 1/20 FC: 1/50-1/100

种属反应性: Rabbit

克隆性: Rabbit Polyclonal

分子量: Calculated MW: 14 kDa; Observed MW: 39 kDa

亚型: IgG

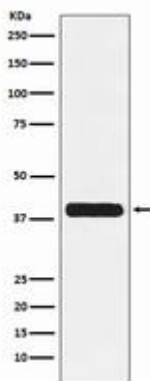
纯化: Affinity Chromatography

种属反应性: Human

成分: PBS (without Mg²⁺ and Ca²⁺), pH 7.3 containing 50% glycerol, 0.5% BSA and 0.02% sodium azide

研究领域: Cardiovascular

储存和运输: Store at -20°C. Avoid repeated freezing and thawing



Western blot analysis of Glycophorin C in K562 lysates using Glycophorin C antibody.



Product Description

Pioneering GTPase and Oncogene Product Development since 2010
