

GLYCOGEN SYNTHASE 1 RABBIT MAB

货号: N262289

产品全名: Glycogen Synthase 1 兔单克隆抗体

基因符号 GYS1; GYS; Glycogen [starch] synthase; muscle

UNIPROT ID: P13807

背景: Transfers the glycosyl residue from UDP-Glc to the non-reducing end of alpha-1,4-glucan. Allosteric activation by glucose-6-phosphate. Phosphorylation reduces the activity towards UDP-glucose. When in the non-phosphorylated state, glycogen synthase does not require glucose-6-phosphate as an allosteric activator; when phosphorylated it does.

抗原: A synthetic peptide of human Glycogen synthase 1

经过测试的应用: WB, ICC/IF, IP

推荐稀释比: WB: 1/500-1/1000 IF: 1/50-1/200 IP: 1/20

种属反应性: Rabbit

克隆性: Rabbit Monoclonal

克隆编号: R02-2F3

分子量: Calculated MW: 84 kDa; Observed MW: 84 kDa

亚型: IgG

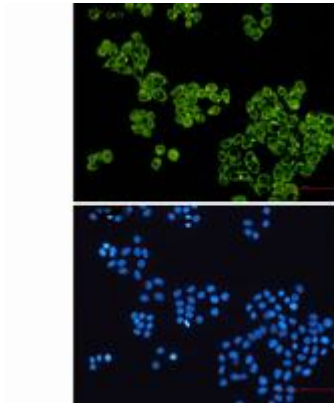
纯化: Affinity Purified

种属反应性: Human, Rat

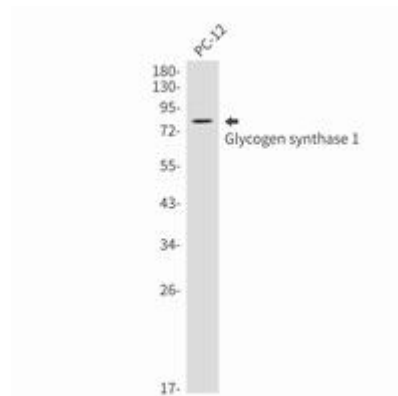
成分: PBS (without Mg²⁺ and Ca²⁺), pH 7.3 containing 50% glycerol, 0.5% BSA and 0.02% sodium azide

研究领域: Signal Transduction

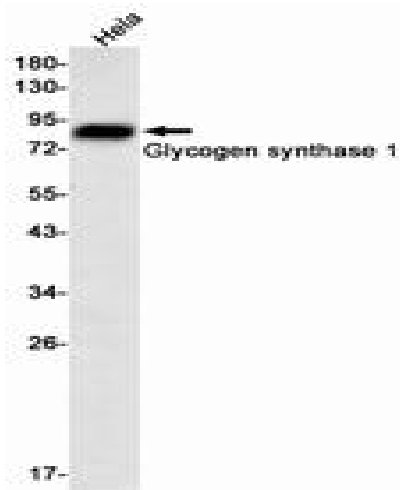
储存和运输: Store at -20°C. Avoid repeated freezing and thawing



Immunocytochemistry analysis of Glycogen synthase 1 (green) in HeLa using Glycogen synthase 1 antibody, and DAPI (blue)



Western blot analysis of Glycogen synthase 1 in PC-12 lysates using Glycogen Synthase 1 antibody.



Western blot analysis of Glycogen synthase 1 in HeLa lysates using Glycogen synthase 1 antibody.