

GLUTATHIONE SYNTHETASE RABBIT MAB

货号: N263347

产品全名: Glutathione Synthetase 兔单克隆抗体

基因符号 Glutathione synthase; Glutathione synthetase; GSH S; GSH synthetase; GSH-S; GSHS; GSS; HEL-S-64p; HEL-S-88n

UNIPROT ID: P48637

背景: Sulfur metabolism; glutathione biosynthesis; glutathione from L-cysteine and L-glutamate: step 2/2.

抗原: A synthetic peptide of human Glutathione Synthetase

经过测试的应用: WB,IHC-P

推荐稀释比: WB: 1/500-1/1000 IHC: 1/50-1/100

种属反应性: Rabbit

克隆性: Rabbit Monoclonal

克隆编号: R07-2B0

分子量: Calculated MW: 52 kDa; Observed MW: 52 kDa

亚型: IgG

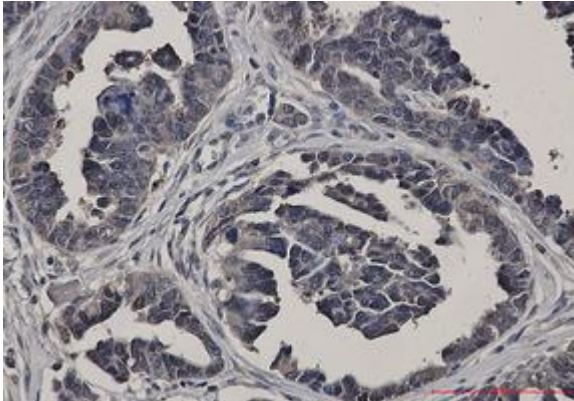
纯化: Affinity Purified

种属反应性: Human, Mouse and Rat

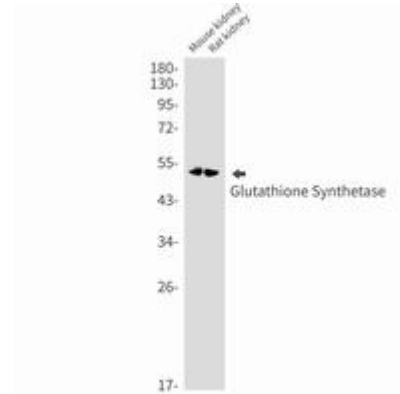
成分: PBS (without Mg²⁺ and Ca²⁺), pH 7.3 containing 50% glycerol, 0.5% BSA and 0.02% sodium azide

研究领域: Signal Transduction

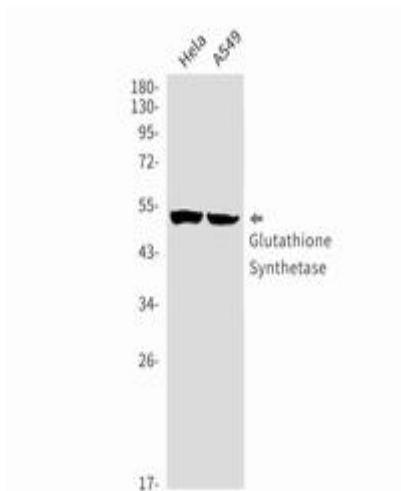
储存和运输: Store at -20°C. Avoid repeated freezing and thawing



Immunohistochemistry analysis of paraffin-embedded Human Cholangiocarcinoma using Glutathione Synthetase antibody. High-pressure and temperature Sodium Citrate pH 6.0 was used for antigen retrieval.



Western blot analysis of Glutathione Synthetase in mouse kidney, rat kidney lysates using Glutathione Synthetase antibody.



Western blot analysis of Glutathione Synthetase in HeLa, A549 lysates using Glutathione Synthetase antibody.