

## GLUTAMINASE RABBIT MAB

货号: N262281

产品全名: Glutaminase 兔单克隆抗体

基因符号 Glutaminase kidney isoform; GLS; GLS1; KGA; K-glutaminase; GAM; GAC; Glutaminase C; L-glutamine amidohydrolase

**UNIPROT ID:** O94925

**背景:** Catalyzes the first reaction in the primary pathway for the renal catabolism of glutamine. Plays a role in maintaining acid-base homeostasis. Regulates the levels of the neurotransmitter glutamate in the brain. Isoform 2 lacks catalytic activity. Isoform 1 and isoform 3 are activated by phosphate. Inhibited by BPTES. BPTES binds between subunits and favors dissociation of the tetramer into dimers.

**抗原:** Recombinant protein of human Glutaminase C

**经过测试的应用:** WB, ICC/IF, IP

**推荐稀释比:** WB: 1/500-1/1000 IF: 1/50-1/200 IP: 1/20

**种属反应性:** Rabbit

**克隆性:** Rabbit Monoclonal

**克隆编号:** R08-3D8

**分子量:** Calculated MW: 73 kDa; Observed MW: 68 kDa

**亚型:** IgG

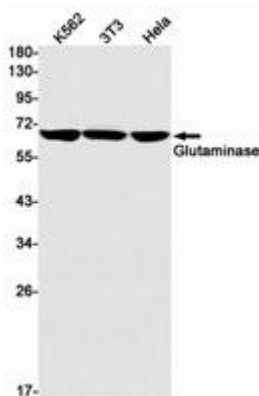
**纯化:** Affinity Purified

**种属反应性:** Human, Mouse and Rat

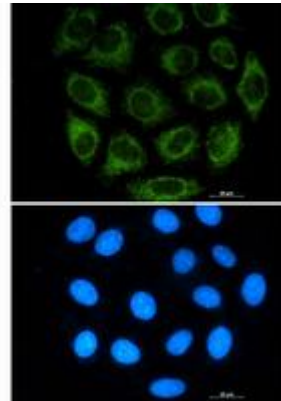
**成分:** PBS (without Mg<sup>2+</sup> and Ca<sup>2+</sup>), pH 7.3 containing 50% glycerol, 0.5% BSA and 0.02% sodium azide

**研究领域:** Neuroscience & Glutamatergic Neurons

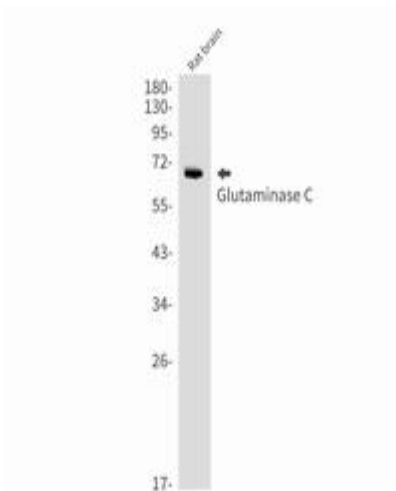
**储存和运输:** Store at -20°C. Avoid repeated freezing and thawing



Western blot analysis of Glutaminase in K562, 3T3, HeLa lysates using Glutaminase antibody



Immunocytochemistry analysis of Glutaminase (green) in A549 using Glutaminase antibody, and DAPI (blue).



Western blot analysis of Glutaminase C in rat brain lysates using Glutaminase C antibody.