

## GLUTAMATE RECEPTOR 2/3 RABBIT PAB

货号: N225938

产品全名: Glutamate Receptor 2/3 兔多抗

基因符号 GluR K2; GluR K3; GLURB; GLURC; GRIA2; GRIA3

**UNIPROT ID:** P42262/P42263

背景: Ion channels activated by glutamate are typically divided into two classes. Those sensitive to N-methyl-D-aspartate (NMDA) are designated NMDA receptors (NMDAR) while those activated by  $\alpha$ -amino-3-hydroxy-5-methyl-4-isoxalone propionic acid (AMPA) are known as AMPA receptors (AMPA).

抗原: A synthesized peptide derived from human GluR2+GluR3

经过测试的应用: WB,IP

推荐稀释比: WB: 1/500-1/1000 IP: 1/20

种属反应性: Rabbit

克隆性: Rabbit Polyclonal

分子量: Calculated MW: 99 kDa; Observed MW: 99 kDa

亚型: IgG

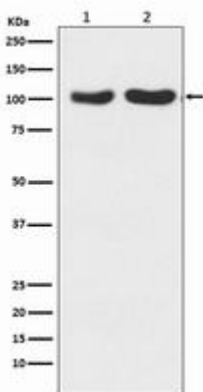
纯化: Affinity Chromatography

种属反应性: Human, Mouse and Rat

成分: PBS (without  $Mg^{2+}$  and  $Ca^{2+}$ ), pH 7.3 containing 50% glycerol, 0.5% BSA and 0.02% sodium azide

研究领域: Neuroscience&Glutamate Receptor

储存和运输: Store at  $-20^{\circ}C$ . Avoid repeated freezing and thawing



Western blot analysis of GluR2+GluR3 in (1) Human fetal brain lysates; (2) mouse brain lysates using Glutamate Receptor 2/3 antibody.



# Product Description

Pioneering GTPase and Oncogene Product Development since 2010

---