

## GLUCOSE TRANSPORTER GLUT4 RABBIT PAB

货号: N225475

产品全名: Glucose Transporter GLUT4 兔多抗

基因符号 SLC2A4; GLUT4; Solute carrier family 2; facilitated glucose transporter member 4; Glucose transporter type 4; insulin-responsive; GLUT-4

**UNIPROT ID:** P14672

**背景:** This gene is a member of the solute carrier family 2 (facilitated glucose transporter) family and encodes a protein that functions as an insulin-regulated facilitative glucose transporter. In the absence of insulin, this integral membrane protein is sequestered within the cells of muscle and adipose tissue. Within minutes of insulin stimulation, the protein moves to the cell surface and begins to transport glucose across the cell membrane. Mutations in this gene have been associated with noninsulin-dependent diabetes mellitus (NIDDM).

**抗原:** The antiserum was produced against synthesized peptide derived from the N-terminal region of human SLC2A4. AA range:21-70

**经过测试的应用:** WB,IHC-P,ELISA

**推荐稀释比:** WB: 1/500-1/1000 IHC: 1/50-1/100 ELISA: 1/10000

**种属反应性:** Rabbit

**克隆性:** Rabbit Polyclonal

**分子量:** Calculated MW: 55 kDa; Observed MW: 55 kDa

**亚型:** IgG

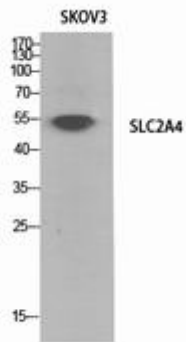
**纯化:** Affinity Purified

**种属反应性:** Human, Mouse and Rat

**成分:** PBS (without Mg<sup>2+</sup> and Ca<sup>2+</sup>), pH 7.3 containing 50% glycerol, 0.5% BSA and 0.02% sodium azide

**研究领域:** Signal Transduction

**储存和运输:** Store at -20°C. Avoid repeated freezing and thawing



Western blot analysis of Glucose Transporter GLUT4 in SKOV-3 lysates using Glucose Transporter GLUT4 antibody.