

## GLUCOSE 6 PHOSPHATE DEHYDROGENASE RABBIT MAB

货号: N262279

产品全名: Glucose 6 Phosphate Dehydrogenase 兔单克隆抗体

基因符号 G6PD; Glucose-6-phosphate 1-dehydrogenase; G6PD

**UNIPROT ID:** P11413

背景: Catalyzes the rate-limiting step of the oxidative pentose-phosphate pathway, which represents a route for the dissimilation of carbohydrates besides glycolysis. The main function of this enzyme is to provide reducing power (NADPH) and pentose phosphates for fatty acid and nucleic acid synthesis.

抗原: Recombinant protein of human Glucose 6 Phosphate Dehydrogenase

经过测试的应用: WB,IHC-P,IP

推荐稀释比: WB: 1/500-1/1000 IHC: 1/50-1/100 IP: 1/20

种属反应性: Rabbit

克隆性: Rabbit Monoclonal

克隆编号: R02-6B6

分子量: Calculated MW: 59 kDa; Observed MW: 59 kDa

亚型: IgG

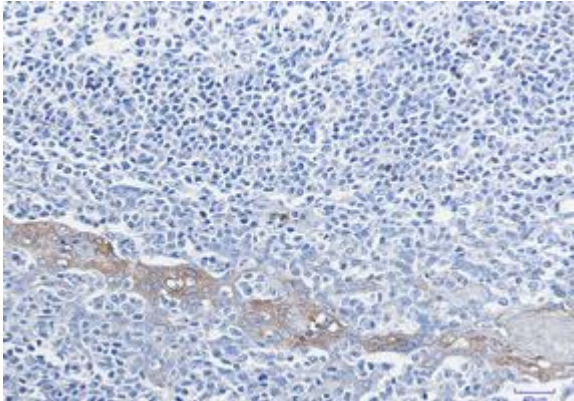
纯化: Affinity Purified

种属反应性: Human,Rat

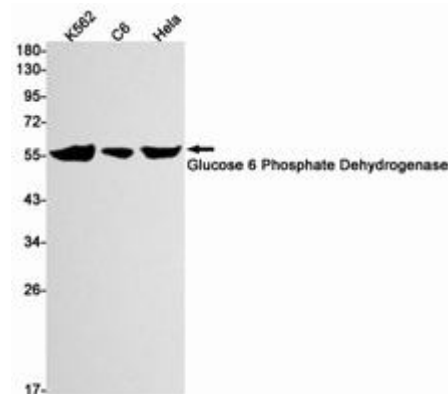
成分: PBS (without Mg<sup>2+</sup> and Ca<sup>2+</sup>), pH 7.3 containing 50% glycerol, 0.5% BSA and 0.02% sodium azide

研究领域: Signal Transduction

储存和运输: Store at -20°C. Avoid repeated freezing and thawing



Immunohistochemistry analysis of paraffin-embedded Human tonsil using Glucose 6 Phosphate Dehydrogenase antibody. High-pressure and temperature Sodium Citrate pH 6.0 was used for antigen retrieval.



Western blot analysis of Glucose 6 Phosphate Dehydrogenase in K562, C6, HeLa lysates using Glucose 6 Phosphate Dehydrogenase antibody.