

GLT8D1 RABBIT PAB

货号: S219467

产品全名: GLT8D1 兔多抗

基因符号 AD-017; MSTP139

UNIPROT ID: Q68CQ7 (Gene Accession - BC119670)

背景: This gene encodes a member of the glycosyltransferase family. The specific function of this protein has not been determined. Alternative splicing results in multiple transcript variants of this gene [provided by RefSeq, May 2013]

抗原: Fusion protein of human GLT8D1

经过测试的应用: ELISA, WB, IHC

推荐稀释比: IHC: 150-300;WB: 500-2000;ELISA: 2000-5000

种属反应性: Rabbit

克隆性: Rabbit Polyclonal

亚型: Immunogen-specific rabbit IgG

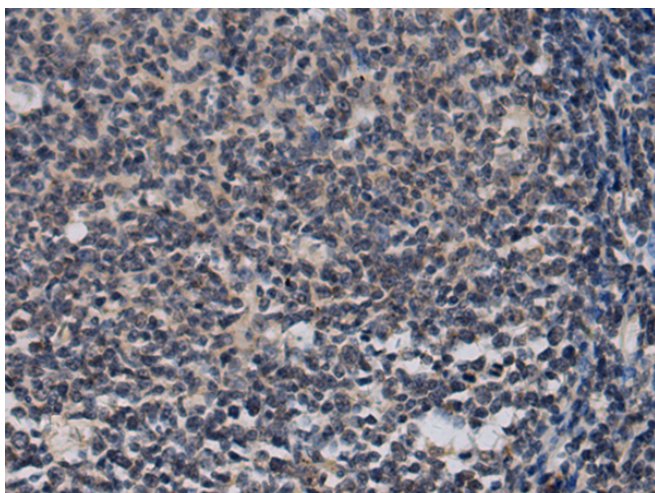
纯化: Antigen affinity purification

种属反应性: Human, Mouse, Rat

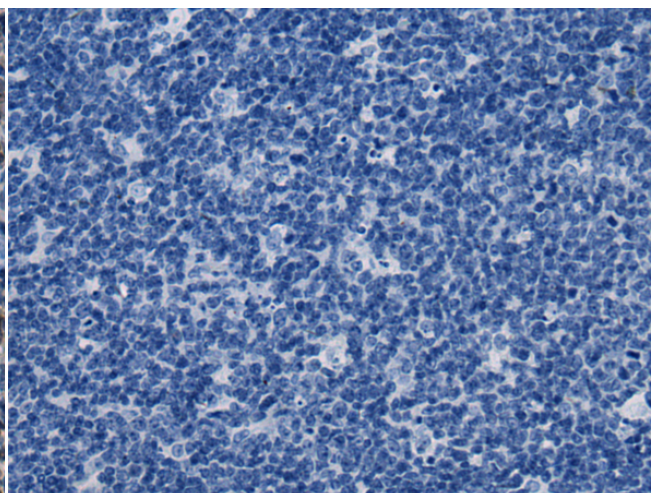
成分: PBS (without Mg²⁺ and Ca²⁺), pH 7.4, 150 mM NaCl, 0.05% Sodium Azide and 40% glycerol

研究领域: Cell Biology

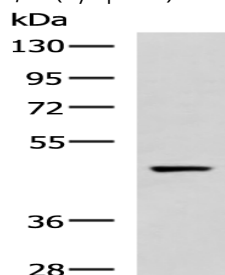
储存和运输: Store at -20°C. Avoid repeated freezing and thawing



Immunohistochemistry analysis of paraffin embedded Human tonsil tissue using 219467 (GLT8D1 Antibody) at a dilution of 1/190 (Cytoplasm).



In comparison with the IHC on the left, the same paraffin-embedded Human tonsil tissue is first treated with the fusion protein and then with 219467 (Anti-GLT8D1 Antibody) at dilution 1/190.



Gel: 8% SDS-PAGE, Lysate: 40 µg;

Lane: 293T cell lysate;

Primary antibody: 219467 (GLT8D1 Antibody) at dilution 1/800;

Secondary antibody: HRP-conjugated Goat anti rabbit IgG at 1/5000 dilution;

Exposure time: 20 seconds