

GLRA1 RABBIT PAB

货号: S220288

产品全名: GLRA1 兔多抗

基因符号: STHE; HKPX1

UNIPROT ID: P23415 (Gene Accession - NP_000162)

背景: The protein encoded by this gene is a subunit of a pentameric inhibitory glycine receptor. The receptor mediates postsynaptic inhibition in the central nervous system. Defects in this gene are a cause of startle disease (STHE), also known as hereditary hyperekplexia or congenital stiff-person syndrome. Two transcript variants encoding different isoforms have been found for this gene.

抗原: Synthetic peptide of human GLRA1

经过测试的应用: ELISA, WB, IHC

推荐稀释比: IHC: 25-100; WB: 500-2000; ELISA: 2000-5000

种属反应性: Rabbit

克隆性: Rabbit Polyclonal

亚型: Immunogen-specific rabbit IgG

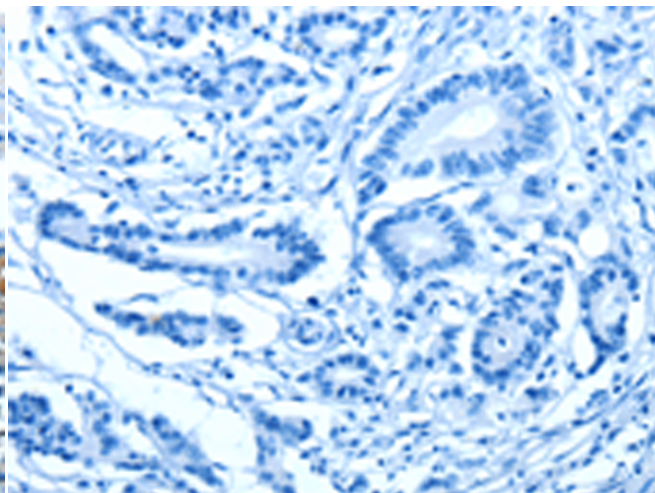
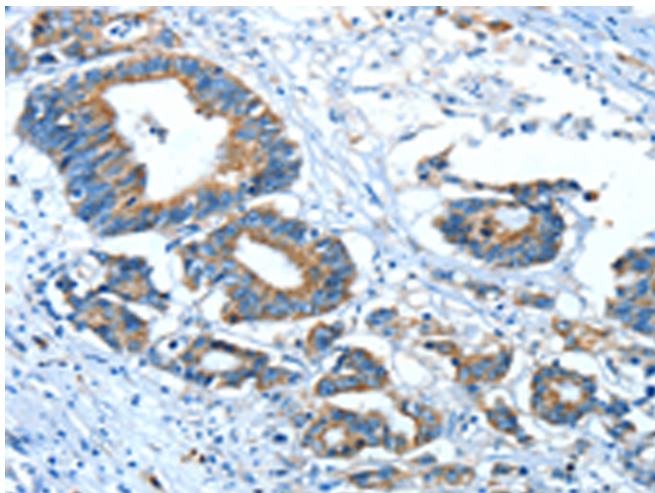
纯化: Antigen affinity purification

种属反应性: Human, Mouse, Rat

成分: PBS (without Mg²⁺ and Ca²⁺), pH 7.4, 150 mM NaCl, 0.05% Sodium Azide and 40% glycerol

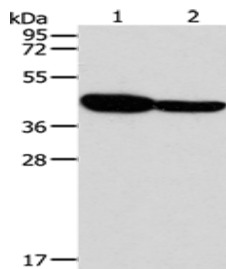
研究领域: Neuroscience

储存和运输: Store at -20°C. Avoid repeated freezing and thawing



Immunohistochemistry analysis of paraffin embedded Human colon cancer tissue using 220288 (GLRA1 Antibody) at a dilution of 1/30 (Cytoplasm).

In comparison with the IHC on the left, the same paraffin-embedded Human colon cancer tissue is first treated with the synthetic peptide and then with 220288 (Anti-GLRA1 Antibody) at dilution 1/30.



Gel: 10% SDS-PAGE, Lysate: 40 µg;
Lane 1-2: Mouse brain tissue, Human fetal brain tissue;
Primary antibody: 220288 (GLRA1 Antibody) at dilution 1/500;
Secondary antibody: Goat anti rabbit IgG at 1/8000 dilution;
Exposure time: 1 minute