

GLP1R RABBIT PAB

货号: S216534

产品全名: GLP1R 兔多抗

基因符号

UNIPROT ID: P43220 (Gene Accession - BC113493)

背景: The glucagon-like peptide 1 receptor (GLP1R) is a human gene which resides on chromosome 6. The protein encoded by this gene is a member of the glucagon receptor family of G protein-coupled receptors. GLP1R binds specifically the glucagon-like peptide-1 (GLP1) and has much lower affinity for related peptides such as the gastric inhibitory polypeptide and glucagon. GLP1R is known to be expressed in pancreatic beta cells. Activated GLP1R stimulates the adenylyl cyclase pathway which results in increased insulin synthesis and release of insulin. Consequently GLP1R has been suggested as a potential target for the treatment of diabetes.

抗原: Fusion protein of human GLP1R

经过测试的应用: ELISA, IHC

推荐稀释比: IHC: 25-100; ELISA: 2000-5000

种属反应性: Rabbit

克隆性: Rabbit Polyclonal

亚型: Immunogen-specific rabbit IgG

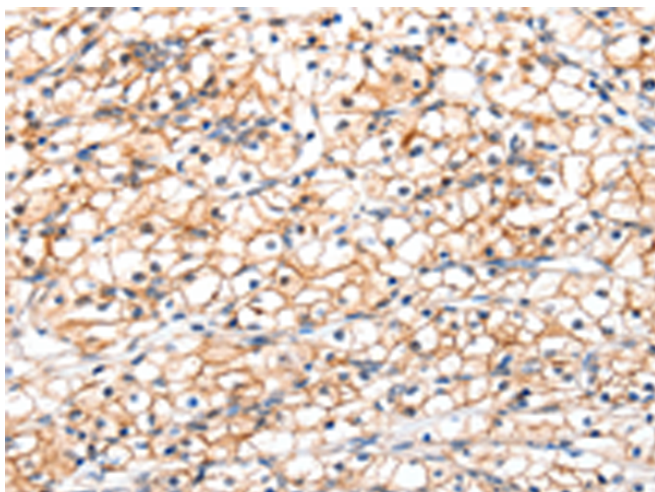
纯化: Antigen affinity purification

种属反应性: Human, Mouse, Rat

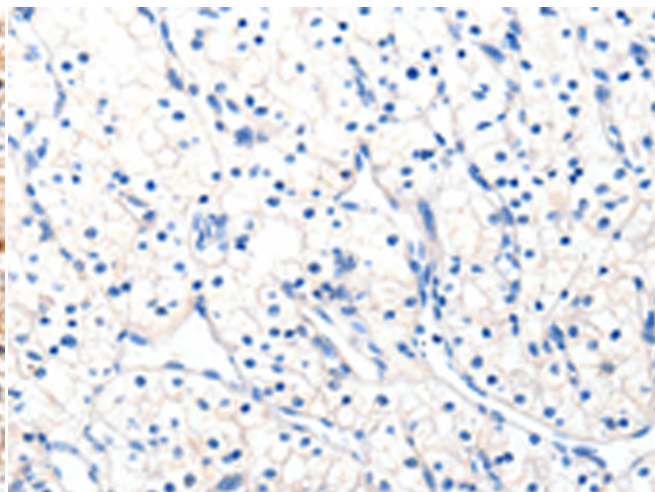
成分: PBS (without Mg²⁺ and Ca²⁺), pH 7.4, 150 mM NaCl, 0.05% Sodium Azide and 40% glycerol

研究领域: Neuroscience, Cardiovascular

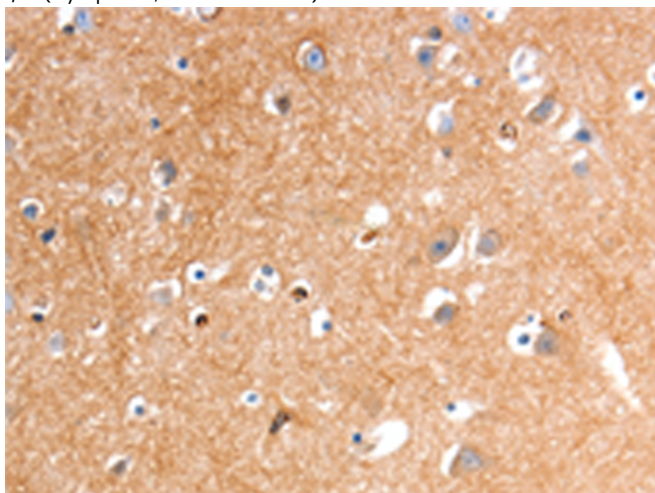
储存和运输: Store at -20°C. Avoid repeated freezing and thawing



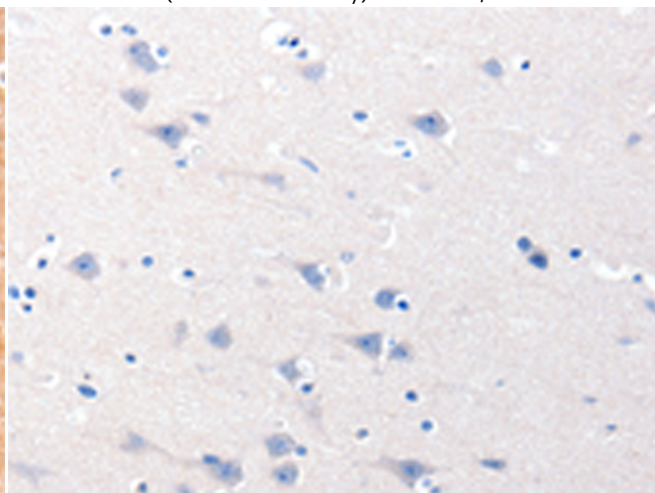
Immunohistochemistry analysis of paraffin embedded Human renal cancer tissue using 216534 (GLP1R Antibody) at a dilution of 1/20 (Cytoplasm, Cell membrane).



In comparison with the IHC on the left, the same paraffin-embedded Human renal cancer tissue is first treated with the fusion protein and then with 216534 (Anti-GLP1R Antibody) at dilution 1/20.



The image on the left is immunohistochemistry of paraffin-embedded Human brain tissue using 216534 (Anti-GLP1R Antibody) at a dilution of 1/20.



In comparison with the IHC on the left, the same paraffin-embedded Human brain tissue is first treated with fusion protein and then with D220698 (Anti-GLP1R Antibody) at dilution 1/20.



Product Description

Pioneering GTPase and Oncogene Product Development since 2010
