

## GLB1 RABBIT PAB

货号: S219406

产品全名: GLB1 兔多抗

基因符号 EBP; ELNRI; MPS4B

**UNIPROT ID:** P16278 (Gene Accession - BC007493)

**背景:** This gene encodes a member of the glycosyl hydrolase 35 family of proteins. Alternative splicing results in multiple transcript variants, at least one of which encodes a preproprotein that is proteolytically processed to generate the mature lysosomal enzyme. This enzyme catalyzes the hydrolysis of a terminal beta-linked galactose residue from ganglioside substrates and other glycoconjugates. Mutations in this gene may result in GM1-gangliosidosis and Morquio B syndrome.

**抗原:** Fusion protein of human GLB1

**经过测试的应用:** ELISA, IHC

**推荐稀释比:** IHC: 250-500; ELISA: 5000-10000

**种属反应性:** Rabbit

**克隆性:** Rabbit Polyclonal

**亚型:** Immunogen-specific rabbit IgG

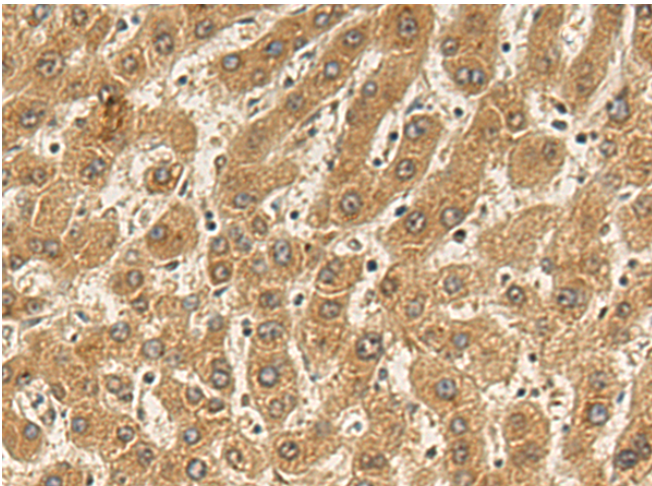
**纯化:** Antigen affinity purification

**种属反应性:** Human

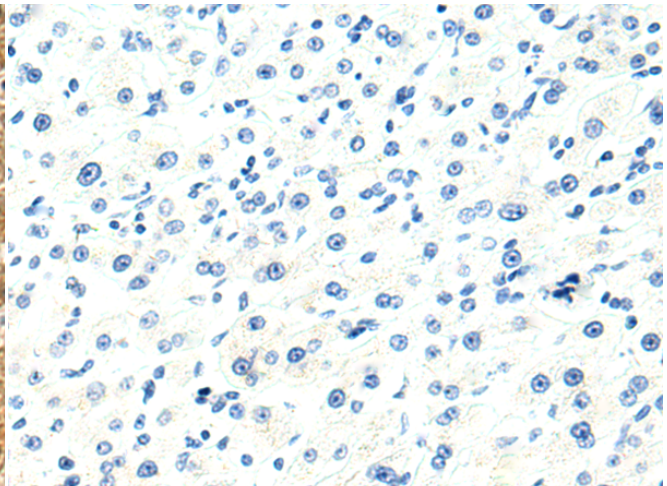
**成分:** PBS (without Mg<sup>2+</sup> and Ca<sup>2+</sup>), pH 7.4, 150 mM NaCl, 0.05% Sodium Azide and 40% glycerol

**研究领域:** Metabolism

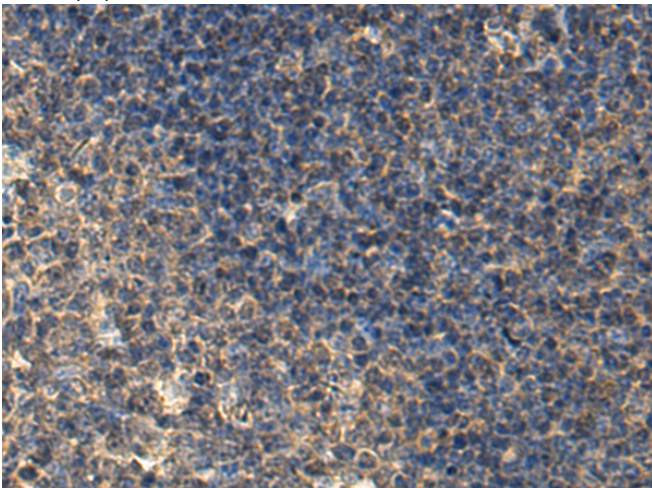
**储存和运输:** Store at -20°C. Avoid repeated freezing and thawing



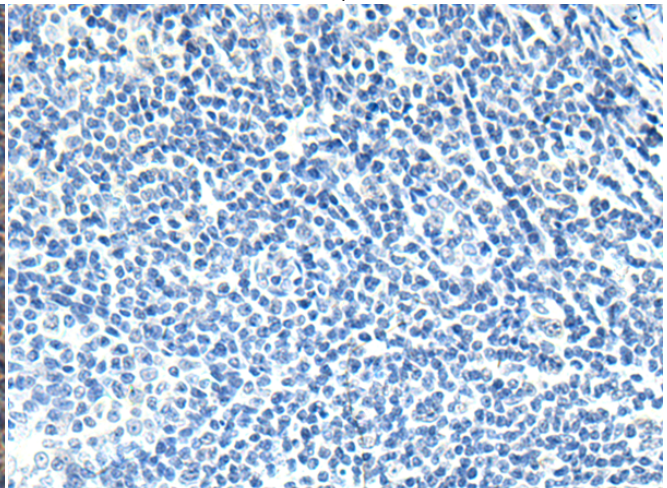
Immunohistochemistry analysis of paraffin embedded Human liver cancer tissue using 219406 (GLB1 Antibody) at a dilution of 1/240 (Cytoplasm).



In comparison with the IHC on the left, the same paraffin-embedded Human liver cancer tissue is first treated with the fusion protein and then with 219406 (Anti-GLB1 Antibody) at dilution 1/240.



The image on the left is immunohistochemistry of paraffin-embedded Human tonsil tissue using 219406 (Anti-GLB1 Antibody) at a dilution of 1/240.



In comparison with the IHC on the left, the same paraffin-embedded Human tonsil tissue is first treated with fusion protein and then with D226802 (Anti-GLB1 Antibody) at dilution 1/240.



# Product Description

Pioneering GTPase and Oncogene Product Development since 2010

---