

GKN2 RABBIT PAB

货号: S215187

产品全名: GKN2 兔多抗

基因符号: GDDR; TFIZ1; PRO813; BRICD1B; VLT1465

UNIPROT ID: Q86XP6 (Gene Accession - NP_872342)

背景: Gastrokine?2 is a putative gastric cancer-specific tumor suppressor gene, the loss of which is known to be involved in the development and progression of gastric cancer, and restoration of gastrokine?2 expression inhibits growth of gastric cancer cells in vitro. However, the underlying mechanism of these effects requires elucidation.

抗原: Synthetic peptide of human GKN2

经过测试的应用: ELISA, WB, IHC

推荐稀释比: IHC: 20-100;WB: 200-1000;ELISA: 5000-10000

种属反应性: Rabbit

克隆性: Rabbit Polyclonal

亚型: Immunogen-specific rabbit IgG

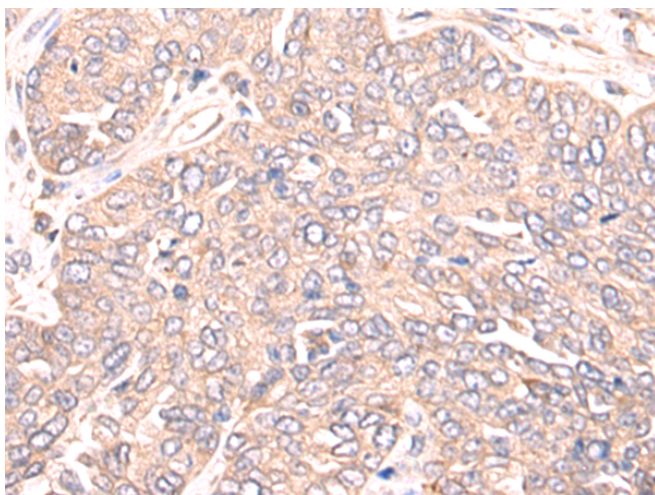
纯化: Antigen affinity purification

种属反应性: Human, Mouse

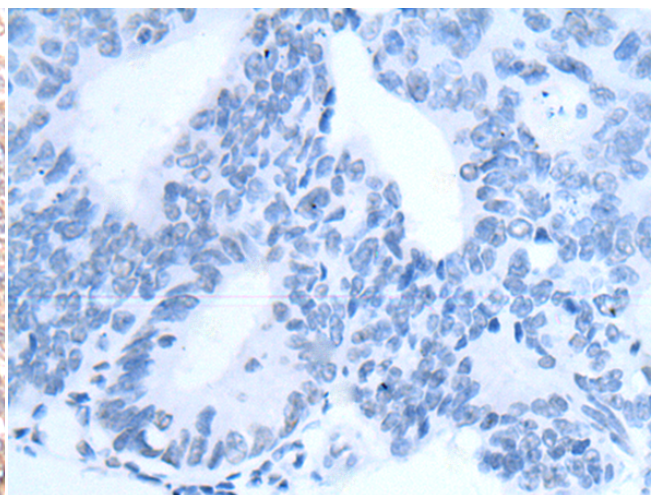
成分: PBS (without Mg²⁺ and Ca²⁺), pH 7.4, 150 mM NaCl, 0.05% Sodium Azide and 40% glycerol

研究领域: Cell Biology

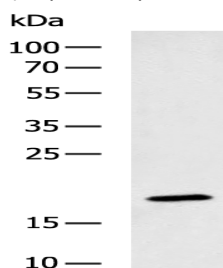
储存和运输: Store at -20°C. Avoid repeated freezing and thawing



Immunohistochemistry analysis of paraffin embedded Human colorectal cancer tissue using 215187 (GKN2 Antibody) at a dilution of 1/30 (Secreted).



In comparison with the IHC on the left, the same paraffin-embedded Human colorectal cancer tissue is first treated with the synthetic peptide and then with 215187 (Anti-GKN2 Antibody) at dilution 1/30.



Gel: 12% SDS-PAGE, Lysate: 40 µg;
Lane: Mouse stomach tissue lysate;
Primary antibody: 215187 (GKN2 Antibody) at dilution 1/200;
Secondary antibody: Goat anti rabbit IgG at 1/8000 dilution;
Exposure time: 2 minutes