

GKAP1 RABBIT PAB

货号: S218864

产品全名: GKAP1 兔多抗

基因符号: FKSG21; GKAP42

UNIPROT ID: Q5VSY0 (Gene Accession - BC014476)

背景: This gene encodes a protein that is highly similar to the mouse cGMP-dependent protein kinase anchoring protein 42kDa. The mouse protein has been found to localize with the Golgi and recruit cGMP-dependent protein kinase I alpha to the Golgi in mouse testes. It is thought to play a role in germ cell development. Transcript variants encoding different isoforms have been found for this gene.

抗原: Fusion protein of human GKAP1

经过测试的应用: ELISA, IHC

推荐稀释比: IHC: 90-450; ELISA: 5000-10000

种属反应性: Rabbit

克隆性: Rabbit Polyclonal

亚型: Immunogen-specific rabbit IgG

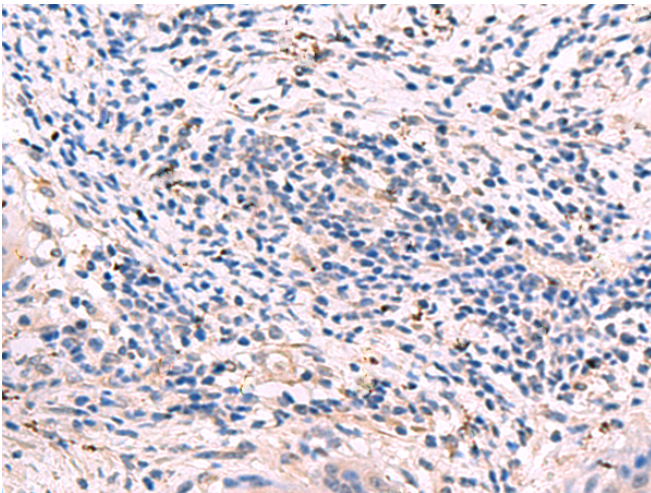
纯化: Antigen affinity purification

种属反应性: Human, Mouse, Rat

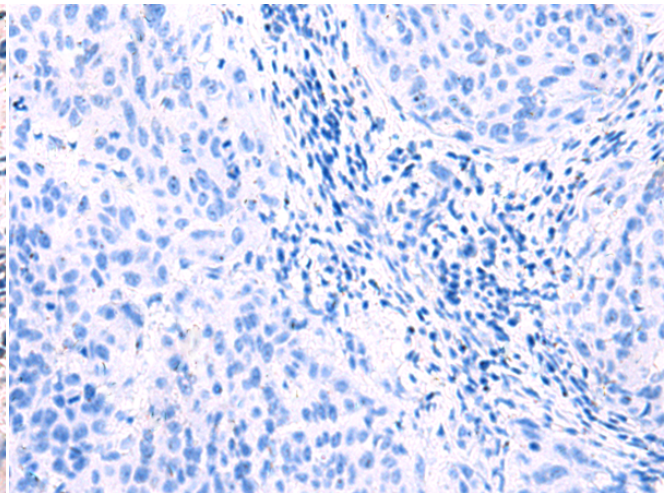
成分: PBS (without Mg²⁺ and Ca²⁺), pH 7.4, 150 mM NaCl, 0.05% Sodium Azide and 40% glycerol

研究领域: Signal Transduction

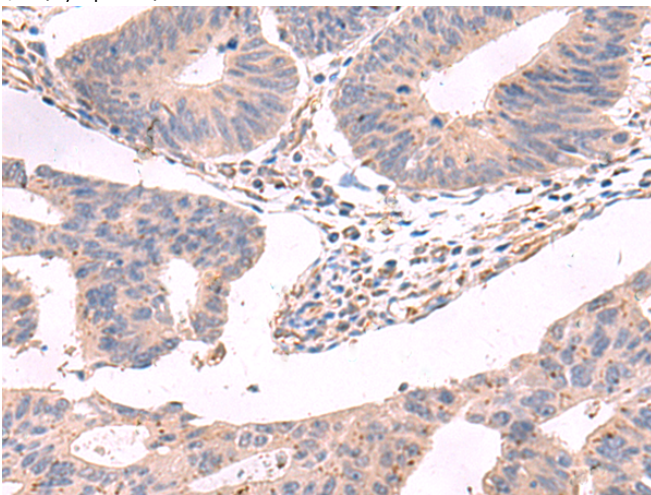
储存和运输: Store at -20°C. Avoid repeated freezing and thawing



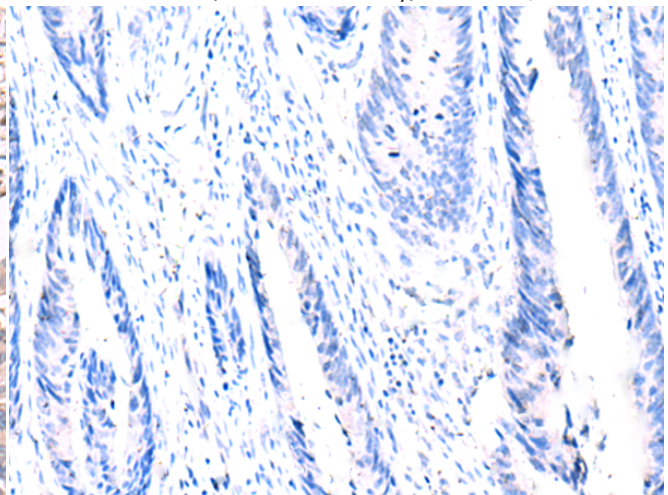
Immunohistochemistry analysis of paraffin embedded Human cervical cancer tissue using 218864(GKAP1 Antibody) at a dilution of 1/95(Cytoplasm).



In comparison with the IHC on the left, the same paraffin-embedded Human cervical cancer tissue is first treated with the fusion protein and then with 218864(Anti-GKAP1 Antibody) at dilution 1/95.



The image on the left is immunohistochemistry of paraffin-embedded Human colorectal cancer tissue using 218864(Anti-GKAP1 Antibody) at a dilution of 1/95.



In comparison with the IHC on the left, the same paraffin-embedded Human colorectal cancer tissue is first treated with fusion protein and then with D225403(Anti-GKAP1 Antibody) at dilution 1/95.



Product Description

Pioneering GTPase and Oncogene Product Development since 2010
