

GJC3 RABBIT PAB

货号: S213459

产品全名: Gjc3 兔多抗

基因符号: Cx29, Gje1

UNIPROT ID: Q921C1 (Gene Accession - NP_536698)

背景: Gap junction gamma-3, also known as connexin-30.2 (Cx30.2) or connexin-31.3 (Cx31.3) or gap junction epsilon-1 (GJE1), is a protein that in humans is encoded by the GJC3 gene. GJC3 is a connexin. This gene encodes a gap junction protein. The encoded protein, also known as a connexin, plays a role in formation of gap junctions, which provide direct connections between neighboring cells. Mutations in this gene have been reported to be associated with nonsyndromic hearing loss.

抗原: Synthetic peptide of mouse Gjc3

经过测试的应用: ELISA, IHC

推荐稀释比: IHC: Oct-50; ELISA: 1000-2000

种属反应性: Rabbit

克隆性: Rabbit Polyclonal

亚型: Immunogen-specific rabbit IgG

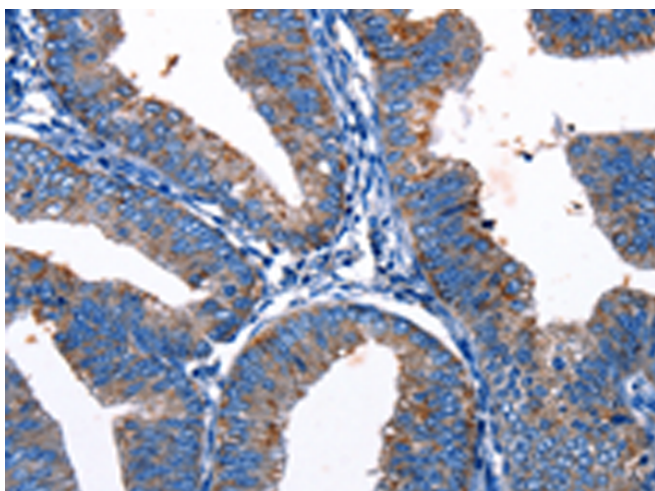
纯化: Antigen affinity purification

种属反应性: Human, Mouse

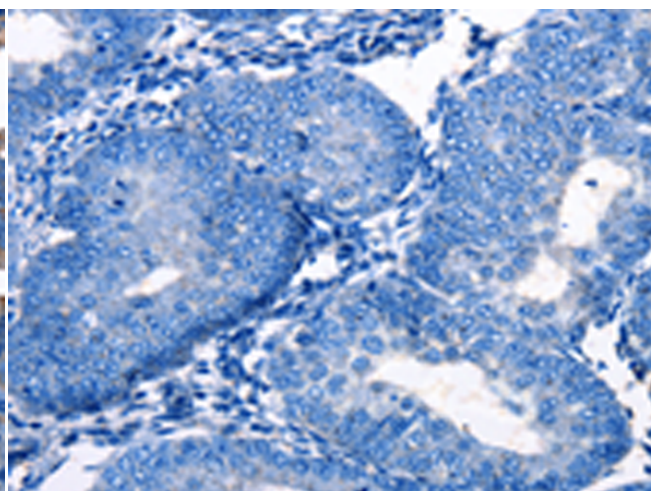
成分: PBS (without Mg²⁺ and Ca²⁺), pH 7.4, 150 mM NaCl, 0.05% Sodium Azide and 40% glycerol

研究领域: Cell Biology

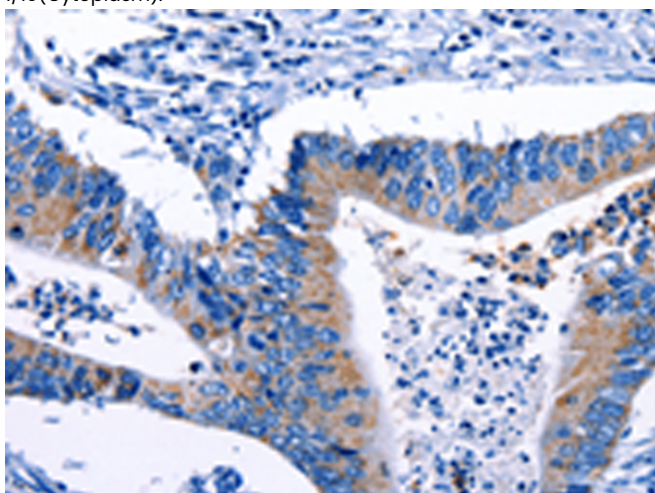
储存和运输: Store at -20°C. Avoid repeated freezing and thawing



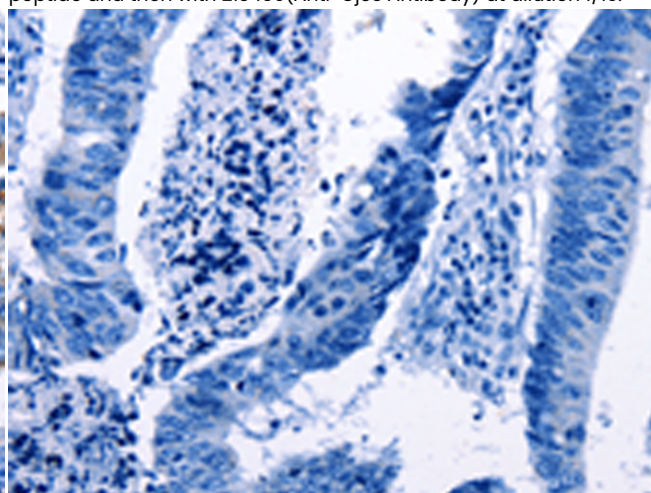
Immunohistochemistry analysis of paraffin embedded Human cervical cancer tissue using 213459 (Gjc3 Antibody) at a dilution of 1/10 (Cytoplasm).



In comparison with the IHC on the left, the same paraffin-embedded Human cervical cancer tissue is first treated with the synthetic peptide and then with 213459 (Anti-Gjc3 Antibody) at dilution 1/10.



The image on the left is immunohistochemistry of paraffin-embedded Human colon cancer tissue using 213459 (Anti-Gjc3 Antibody) at a dilution of 1/10.



In comparison with the IHC on the left, the same paraffin-embedded Human colon cancer tissue is first treated with synthetic peptide and then with D160220 (Anti-Gjc3 Antibody) at dilution 1/10.



Product Description

Pioneering GTPase and Oncogene Product Development since 2010
