

GJA8 RABBIT PAB

货号: S220072

产品全名: GJA8 兔多抗

基因符号 CAE; CAEI; CX50; CZPI; MP70; CTRCT1

UNIPROT ID: P48165 (Gene Accession - NP_005258)

背景: This gene encodes a transmembrane connexin protein that is necessary for lens growth and maturation of lens fiber cells. The encoded protein is a component of gap junction channels and functions in a calcium and pH-dependent manner. Mutations in this gene have been associated with zonular pulverulent cataracts, nuclear progressive cataracts, and cataract-microcornea syndrome.

抗原: Synthetic peptide of human GJA8

经过测试的应用: ELISA, IHC

推荐稀释比: IHC: 25-100; ELISA: 1000-2000

种属反应性: Rabbit

克隆性: Rabbit Polyclonal

亚型: Immunogen-specific rabbit IgG

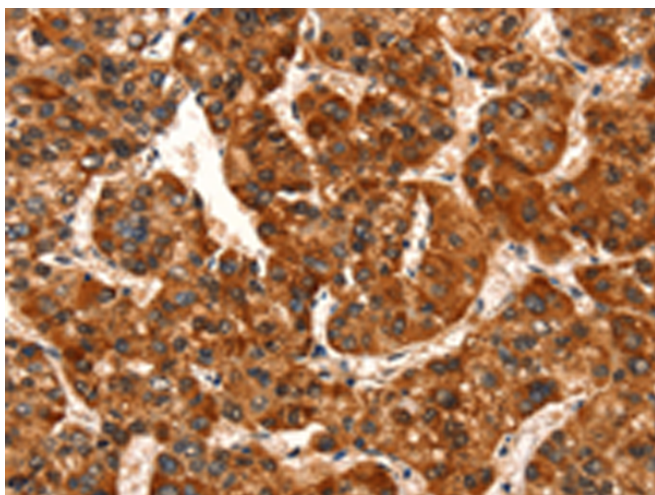
纯化: Antigen affinity purification

种属反应性: Human, Mouse, Rat

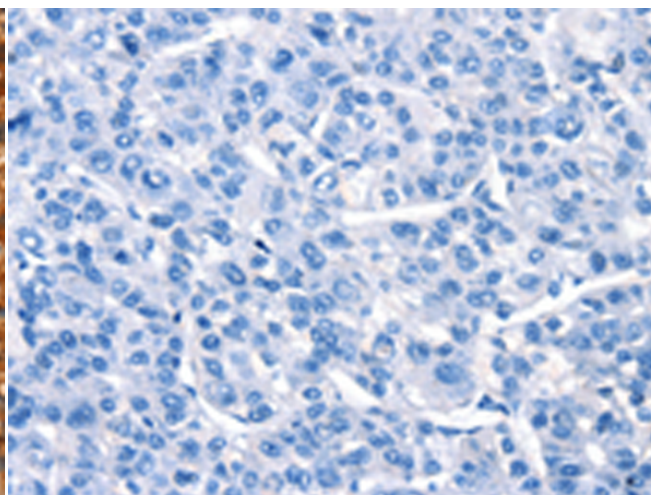
成分: PBS (without Mg²⁺ and Ca²⁺), pH 7.4, 150 mM NaCl, 0.05% Sodium Azide and 40% glycerol

研究领域: Signal Transduction, Neuroscience

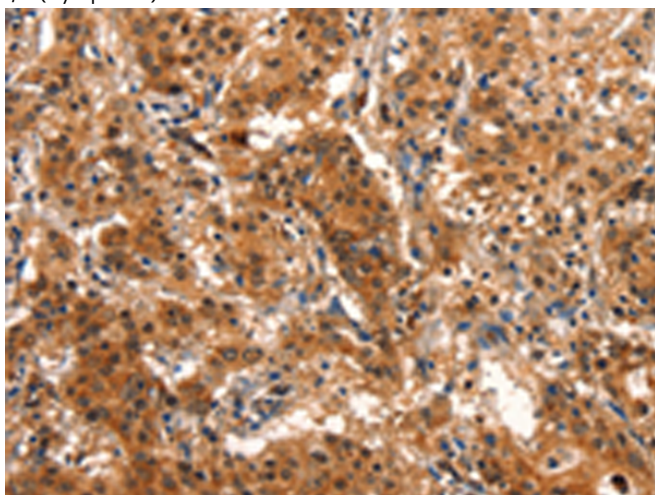
储存和运输: Store at -20°C. Avoid repeated freezing and thawing



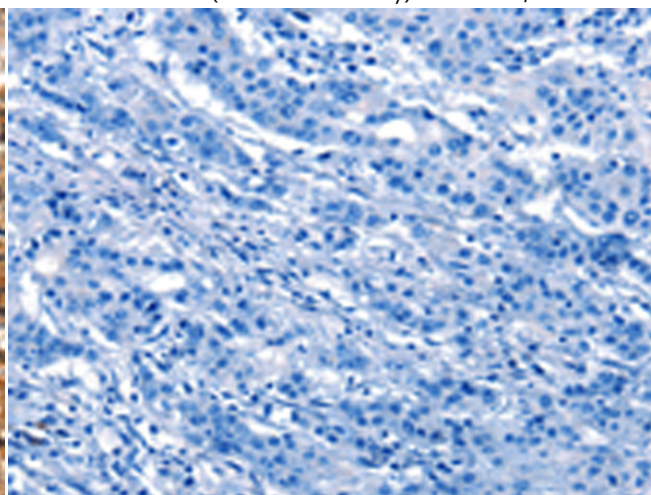
Immunohistochemistry analysis of paraffin embedded Human liver cancer tissue using 220072(GJA8 Antibody) at a dilution of 1/15(Cytoplasm).



In comparison with the IHC on the left, the same paraffin-embedded Human liver cancer tissue is first treated with the synthetic peptide and then with 220072(Anti-GJA8 Antibody) at dilution 1/15.



The image on the left is immunohistochemistry of paraffin-embedded Human gastric cancer tissue using 220072(Anti-GJA8 Antibody) at a dilution of 1/15.



In comparison with the IHC on the left, the same paraffin-embedded Human gastric cancer tissue is first treated with synthetic peptide and then with D260905(Anti-GJA8 Antibody) at dilution 1/15.



Product Description

Pioneering GTPase and Oncogene Product Development since 2010
