

GIPC1 RABBIT PAB

货号: S222082

产品全名: GIPC1 兔多抗

基因符号: NIP; GIPC; IIP-1; TIP-2; SEMCAP; C19orf3; Hs.6454; GLUTICBP; RGS19IP1; SYNECTIN; SYNECTIN

UNIPROT ID: O14908 (Gene Accession - NP_005707)

背景: GIPC1 is a scaffolding protein that regulates cell surface receptor expression and trafficking.

抗原: Synthetic peptide of human GIPC1

经过测试的应用: ELISA, WB, IHC

推荐稀释比: IHC: 40-200; WB: 500-2000; ELISA: 5000-10000

种属反应性: Rabbit

克隆性: Rabbit Polyclonal

亚型: Immunogen-specific rabbit IgG

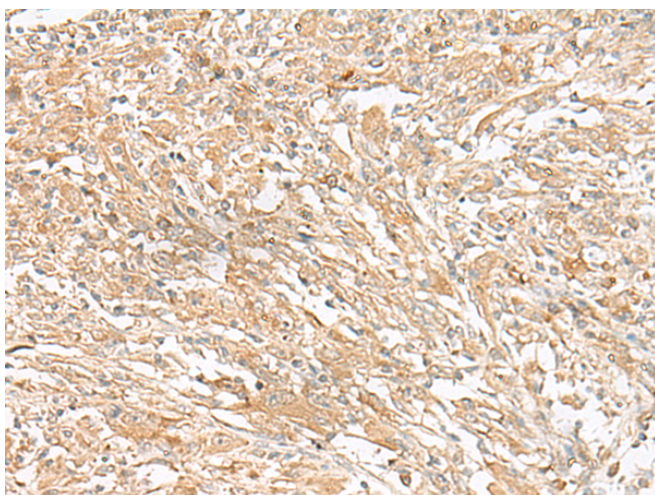
纯化: Antigen affinity purification

种属反应性: Human, Mouse, Rat

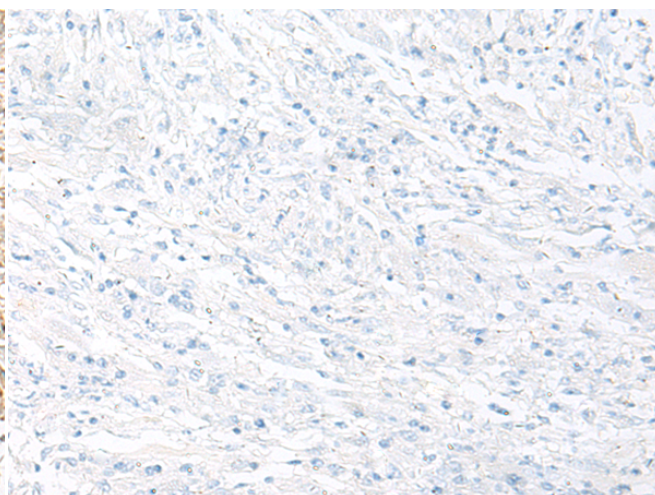
成分: PBS (without Mg²⁺ and Ca²⁺), pH 7.4, 150 mM NaCl, 0.05% Sodium Azide and 40% glycerol

研究领域: Signal Transduction

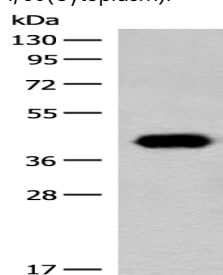
储存和运输: Store at -20°C. Avoid repeated freezing and thawing



Immunohistochemistry analysis of paraffin embedded Human liver cancer tissue using 222082(GIPC1 Antibody) at a dilution of 1/50(Cytoplasm).



In comparison with the IHC on the left, the same paraffin-embedded Human liver cancer tissue is first treated with the synthetic peptide and then with 222082(Anti-GIPC1 Antibody) at dilution 1/50.



Gel: 8%SDS-PAGE, Lysate: 40 µg;

Lane: Hela cell lysate;

Primary antibody: 222082(GIPC1 Antibody) at dilution 1/400;

Secondary antibody: Goat anti rabbit IgG at 1/8000 dilution;

Exposure time: 1 minute