

GINS3 RABBIT PAB

货号: S219266

产品全名: GINS3 兔多抗

基因符号: PSF3

UNIPROT ID: Q9BRX5 (Gene Accession - BC005879)

背景: This gene encodes a protein subunit of the GINS heterotetrameric complex which is essential for the initiation of DNA replication and replisome progression in eukaryotes. Alternatively spliced transcript variants encoding distinct isoforms have been described.

抗原: Fusion protein of human GINS3

经过测试的应用: ELISA, IHC

推荐稀释比: IHC: 50-100; ELISA: 5000-10000

种属反应性: Rabbit

克隆性: Rabbit Polyclonal

亚型: Immunogen-specific rabbit IgG

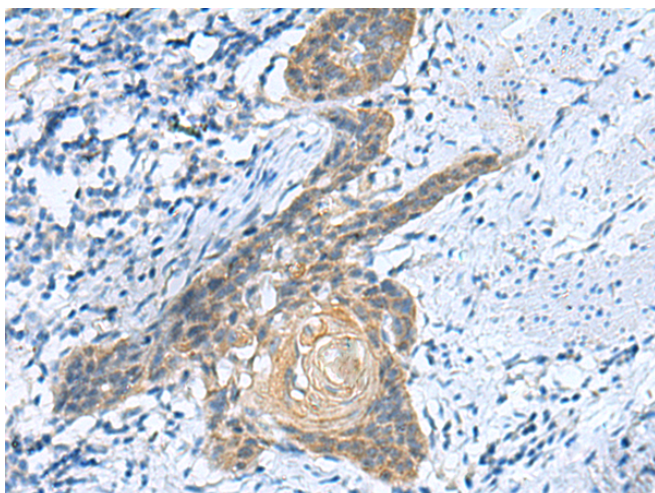
纯化: Antigen affinity purification

种属反应性: Human, Mouse

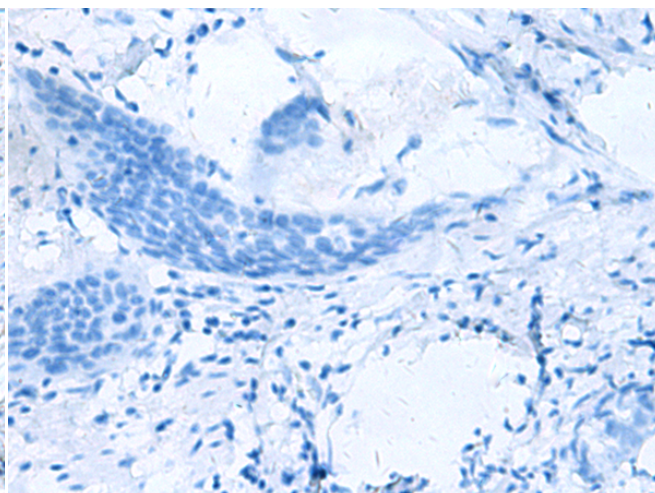
成分: PBS (without Mg²⁺ and Ca²⁺), pH 7.4, 150 mM NaCl, 0.05% Sodium Azide and 40% glycerol

研究领域: Epigenetics and Nuclear Signaling

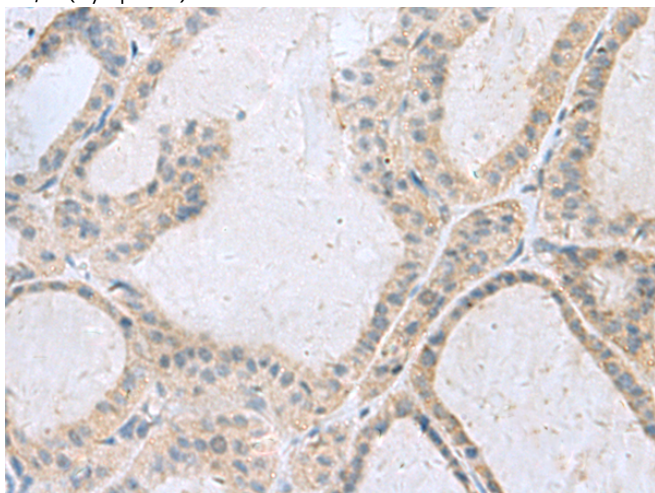
储存和运输: Store at -20°C. Avoid repeated freezing and thawing



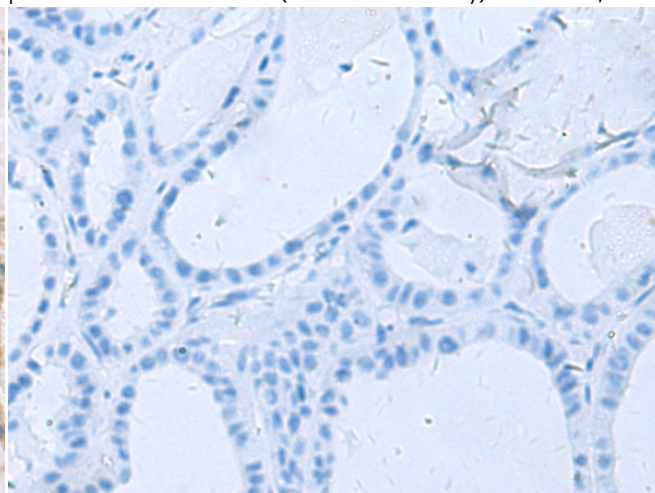
Immunohistochemistry analysis of paraffin embedded Human esophagus cancer tissue using 219266 (GINS3 Antibody) at a dilution of 1/50 (Cytoplasm).



In comparison with the IHC on the left, the same paraffin-embedded Human esophagus cancer tissue is first treated with the fusion protein and then with 219266 (Anti-GINS3 Antibody) at dilution 1/50.



The image on the left is immunohistochemistry of paraffin-embedded Human thyroid cancer tissue using 219266 (Anti-GINS3 Antibody) at a dilution of 1/50.



In comparison with the IHC on the left, the same paraffin-embedded Human thyroid cancer tissue is first treated with fusion protein and then with D226154 (Anti-GINS3 Antibody) at dilution 1/50.



Product Description

Pioneering GTPase and Oncogene Product Development since 2010
