

GIMAP2 RABBIT PAB

货号: S219070

产品全名: GIMAP2 兔多抗

基因符号 IAN12; IMAP2; HIMAP2

UNIPROT ID: Q9UG22 (Gene Accession - BC013934)

背景: This gene encodes a protein belonging to the GTP-binding superfamily and to the immuno-associated nucleotide (IAN) subfamily of nucleotide-binding proteins. In humans, the IAN subfamily genes are located in a cluster at 7q36.1.

抗原: Fusion protein of human GIMAP2

经过测试的应用: ELISA, IHC

推荐稀释比: IHC: 50-300; ELISA: 5000-10000

种属反应性: Rabbit

克隆性: Rabbit Polyclonal

亚型: Immunogen-specific rabbit IgG

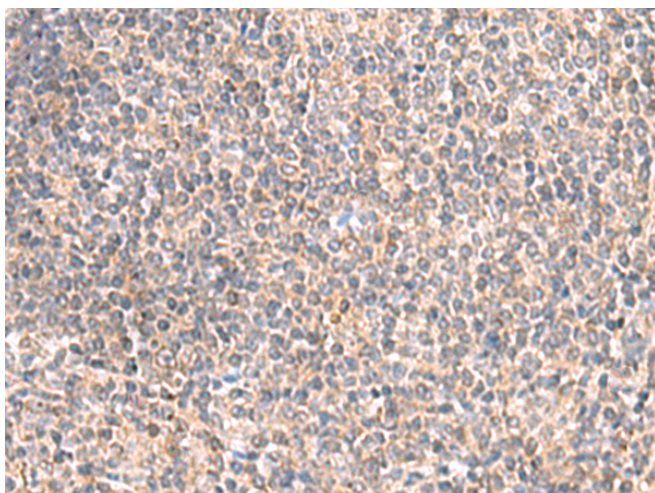
纯化: Antigen affinity purification

种属反应性: Human

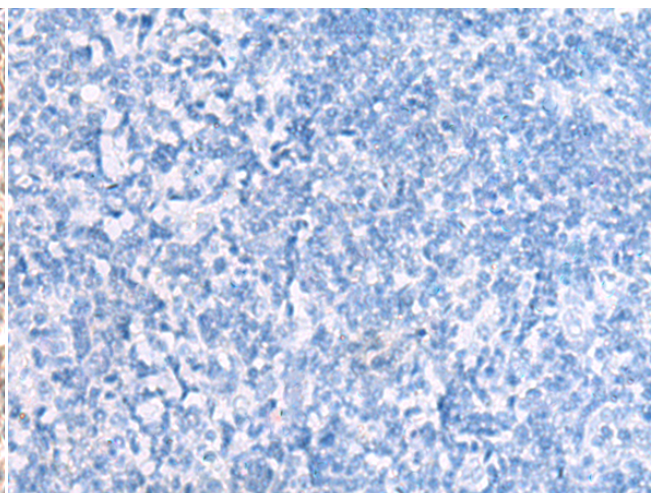
成分: PBS (without Mg²⁺ and Ca²⁺), pH 7.4, 150 mM NaCl, 0.05% Sodium Azide and 40% glycerol

研究领域: Signal Transduction

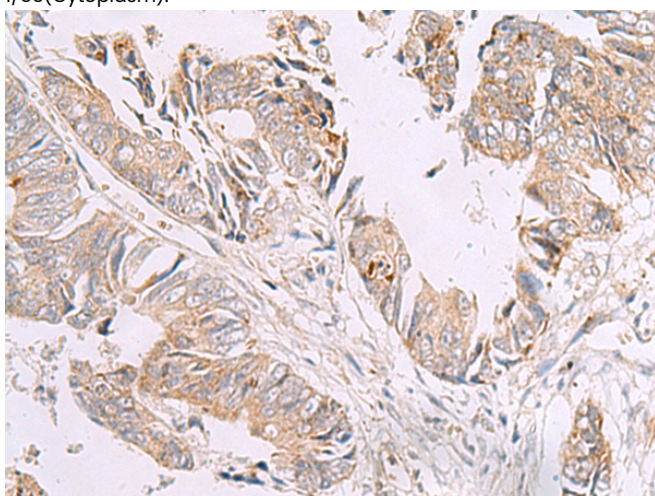
储存和运输: Store at -20°C. Avoid repeated freezing and thawing



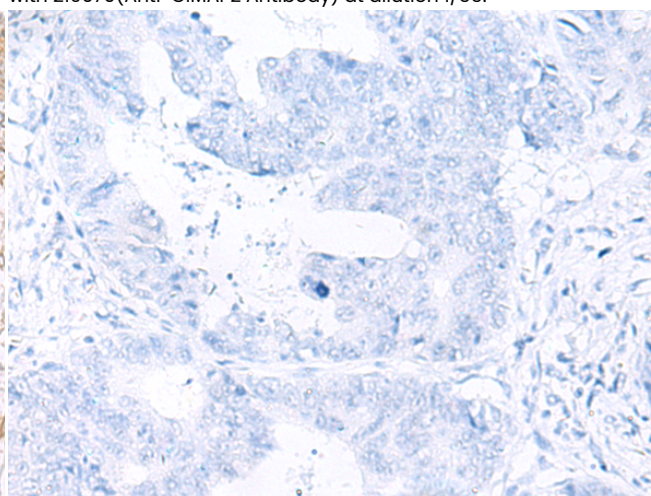
Immunohistochemistry analysis of paraffin embedded Human tonsil tissue using 219070(GIMAP2 Antibody) at a dilution of 1/55(Cytoplasm).



In comparison with the IHC on the left, the same paraffin-embedded Human tonsil tissue is first treated with the fusion protein and then with 219070(Anti-GIMAP2 Antibody) at dilution 1/55.



The image on the left is immunohistochemistry of paraffin-embedded Human colorectal cancer tissue using 219070(Anti-GIMAP2 Antibody) at a dilution of 1/55.



In comparison with the IHC on the left, the same paraffin-embedded Human colorectal cancer tissue is first treated with fusion protein and then with D225764(Anti-GIMAP2 Antibody) at dilution 1/55.



Product Description

Pioneering GTPase and Oncogene Product Development since 2010
