

## GHRHR RABBIT PAB

货号: S215616

产品全名: GHRHR 兔多抗

基因符号: GRFR; GHRFR; IGHD1B

**UNIPROT ID:** Q02643 (Gene Accession - NP\_000814 )

**背景:** This gene encodes a receptor for growth hormone-releasing hormone. Binding of this hormone to the receptor leads to synthesis and release of growth hormone. Mutations in this gene have been associated with isolated growth hormone deficiency (IGHD), also known as Dwarfism of Sindh, a disorder characterized by short stature.

**抗原:** Synthetic peptide of human GHRHR

**经过测试的应用:** ELISA, IHC

**推荐稀释比:** IHC: 50-100; ELISA: 5000-10000

**种属反应性:** Rabbit

**克隆性:** Rabbit Polyclonal

**亚型:** Immunogen-specific rabbit IgG

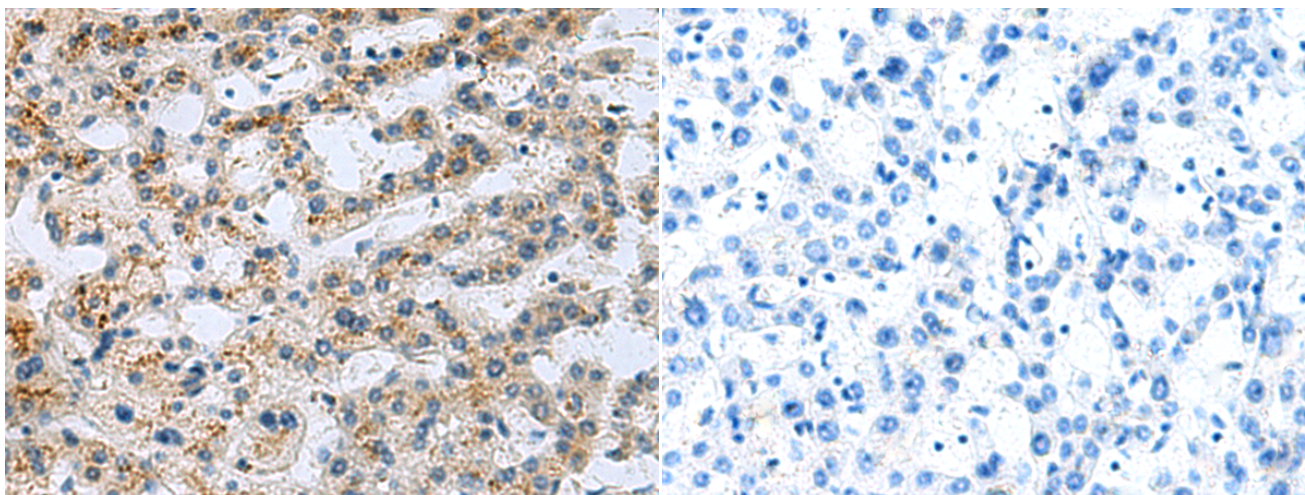
**纯化:** Antigen affinity purification

**种属反应性:** Human

**成分:** PBS (without Mg<sup>2+</sup> and Ca<sup>2+</sup>), pH 7.4, 150 mM NaCl, 0.05% Sodium Azide and 40% glycerol

**研究领域:** Neuroscience

**储存和运输:** Store at -20°C. Avoid repeated freezing and thawing



Immunohistochemistry analysis of paraffin embedded Human liver cancer tissue using 215616(GHRHR Antibody) at a dilution of 1/40(Cell membrane).

In comparison with the IHC on the left, the same paraffin-embedded Human liver cancer tissue is first treated with the synthetic peptide and then with 215616(Anti-GHRHR Antibody) at dilution 1/40.