

## GHITM RABBIT PAB

货号: S217606

产品全名: GHITM 兔多抗

基因符号: DERP2; MICS1; My021; PTD010; TMBIM5; HSPC282

**UNIPROT ID:** Q9H3K2 (Gene Accession - BC010354 )

**背景:** Growth hormone-inducible transmembrane protein is a protein that in humans is encoded by the GHITM gene. Required for the mitochondrial tubular network and cristae organization. Involved in apoptotic release of cytochrome c.

**抗原:** Fusion protein of human GHITM

**经过测试的应用:** ELISA, IHC

**推荐稀释比:** IHC: 50-200; ELISA: 2000-5000

**种属反应性:** Rabbit

**克隆性:** Rabbit Polyclonal

**亚型:** Immunogen-specific rabbit IgG

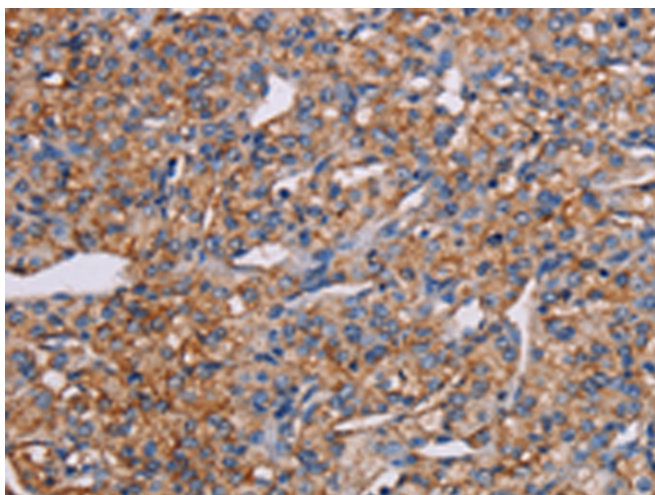
**纯化:** Antigen affinity purification

**种属反应性:** Human, Mouse, Rat

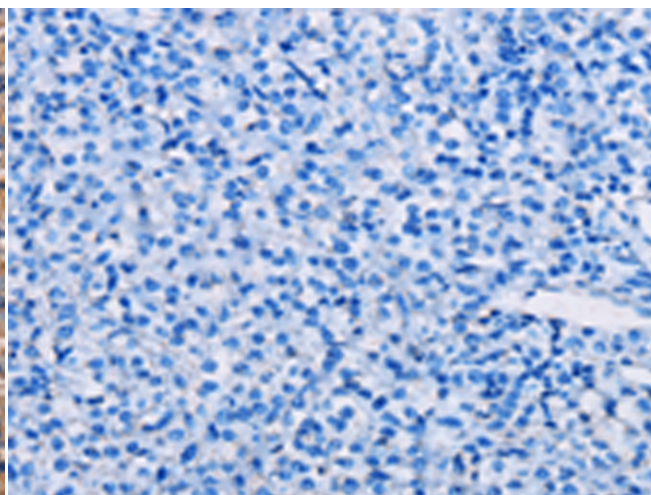
**成分:** PBS (without Mg<sup>2+</sup> and Ca<sup>2+</sup>), pH 7.4, 150 mM NaCl, 0.05% Sodium Azide and 40% glycerol

**研究领域:** Cancer, Metabolism

**储存和运输:** Store at -20°C. Avoid repeated freezing and thawing



Immunohistochemistry analysis of paraffin embedded Human prostate cancer tissue using 217606(GHITM Antibody) at a dilution of 1/30(Cytoplasm).



In comparison with the IHC on the left, the same paraffin-embedded Human prostate cancer tissue is first treated with the fusion protein and then with 217606(Anti-GHITM Antibody) at dilution 1/30.