

GH2 RABBIT PAB

货号: S217475

产品全名: GH2 兔多抗

基因符号: GHL; GHV; GH-V; hGH-V

UNIPROT ID: P01242 (Gene Accession - BC020760)

背景: The protein encoded by this gene is a member of the somatotropin/prolactin family of hormones which play an important role in growth control. The gene, along with four other related genes, is located at the growth hormone locus on chromosome 17 where they are interspersed in the same transcriptional orientation; an arrangement which is thought to have evolved by a series of gene duplications. The five genes share a remarkably high degree of sequence identity. Alternative splicing generates additional isoforms of each of the five growth hormones, leading to further diversity and potential for specialization.

抗原: Fusion protein of human GH2

经过测试的应用: ELISA, WB, IHC

推荐稀释比: IHC: 50-200;WB: 500-2000;ELISA: 2000-5000

种属反应性: Rabbit

克隆性: Rabbit Polyclonal

亚型: Immunogen-specific rabbit IgG

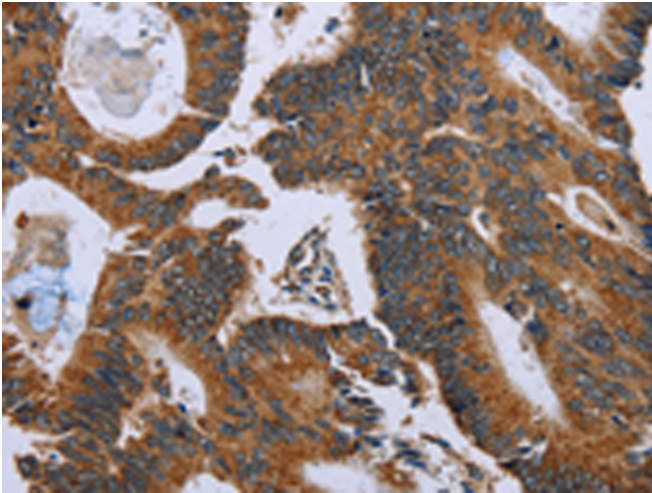
纯化: Antigen affinity purification

种属反应性: Human

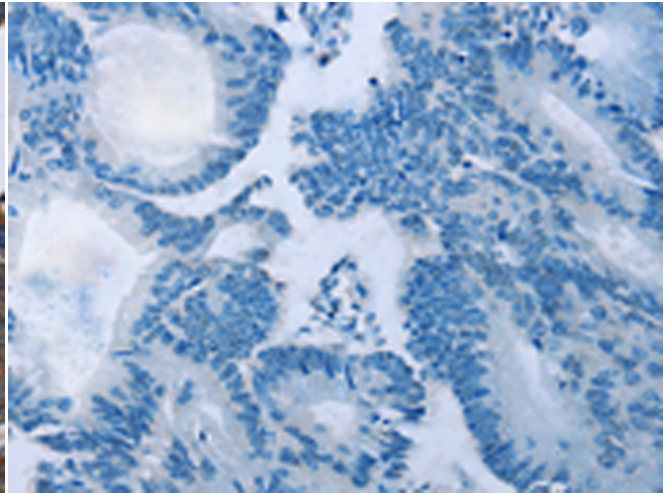
成分: PBS (without Mg²⁺ and Ca²⁺), pH 7.4, 150 mM NaCl, 0.05% Sodium Azide and 40% glycerol

研究领域: Signal Transduction

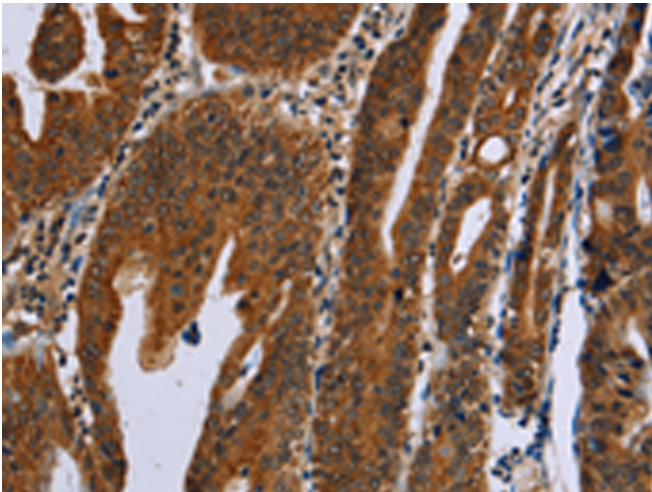
储存和运输: Store at -20°C. Avoid repeated freezing and thawing



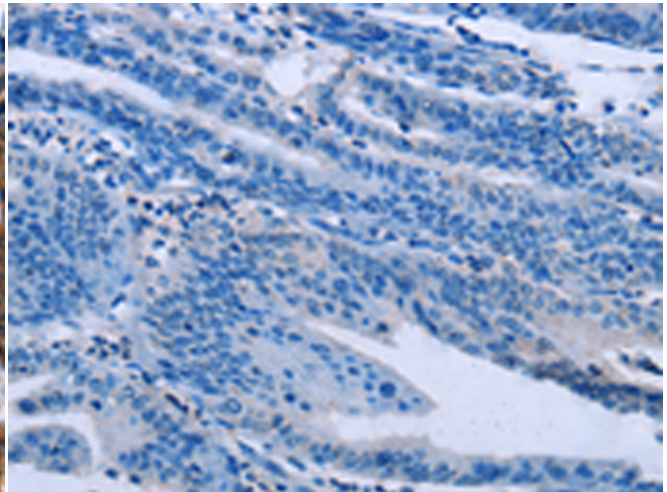
Immunohistochemistry analysis of paraffin embedded Human colon cancer tissue using 217475 (GH2 Antibody) at a dilution of 1/60 (Cytoplasm).



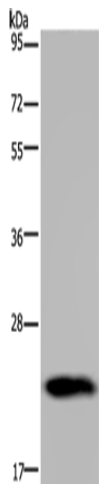
In comparison with the IHC on the left, the same paraffin-embedded Human colon cancer tissue is first treated with the fusion protein and then with 217475 (Anti-GH2 Antibody) at dilution 1/60.



The image on the left is immunohistochemistry of paraffin-embedded Human gastric cancer tissue using 217475 (Anti-GH2 Antibody) at a dilution of 1/60.



In comparison with the IHC on the left, the same paraffin-embedded Human gastric cancer tissue is first treated with fusion protein and then with D222416 (Anti-GH2 Antibody) at dilution 1/60.



Gel: 10% SDS-PAGE, Lysate: 40 µg;
Lane: Human placenta tissue;
Primary antibody: 217475 (GH2 Antibody) at dilution 1/700;
Secondary antibody: Goat anti rabbit IgG at 1/8000 dilution;
Exposure time: 10 seconds



Product Description

Pioneering GTPase and Oncogene Product Development since 2010
