

GFRA3 RABBIT PAB

货号: S219819

产品全名: GFRA3 兔多抗

基因符号: GDNFR3

UNIPROT ID: O60609 (Gene Accession - NP_001487)

背景: The protein encoded by this gene is a glycosylphosphatidylinositol(GPI)-linked cell surface receptor and a member of the GDNF receptor family. It forms a signaling receptor complex with RET tyrosine kinase receptor and binds the ligand, artemin.

抗原: Synthetic peptide of human GFRA3

经过测试的应用: ELISA, IHC

推荐稀释比: IHC: 50-200; ELISA: 500-1000

种属反应性: Rabbit

克隆性: Rabbit Polyclonal

亚型: Immunogen-specific rabbit IgG

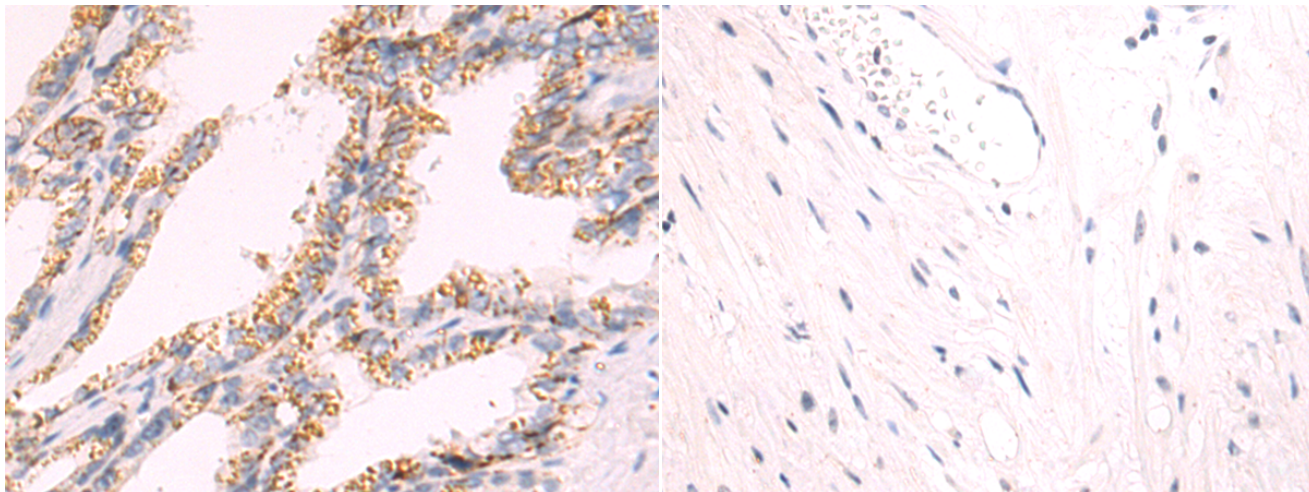
纯化: Antigen affinity purification

种属反应性: Human, Mouse

成分: PBS (without Mg²⁺ and Ca²⁺), pH 7.4, 150 mM NaCl, 0.05% Sodium Azide and 40% glycerol

研究领域: Neuroscience

储存和运输: Store at -20°C. Avoid repeated freezing and thawing



Immunohistochemistry analysis of paraffin embedded Human prostate cancer tissue using 219819(GFRA3 Antibody) at a dilution of 1/50(Cytoplasm).

In comparison with the IHC on the left, the same paraffin-embedded Human prostate cancer tissue is first treated with the synthetic peptide and then with 219819(Anti-GFRA3 Antibody) at dilution 1/50.