

GFAP RABBIT PAB

货号: S210337

产品全名: GFAP 兔多抗

基因符号: ALXDRD

UNIPROT ID: P14136 (Gene Accession - BC013596)

背景: This gene encodes one of the major intermediate filament proteins of mature astrocytes. It is used as a marker to distinguish astrocytes from other glial cells during development. Mutations in this gene cause Alexander disease, a rare disorder of astrocytes in the central nervous system. Alternative splicing results in multiple transcript variants encoding distinct isoforms.

抗原: Fusion protein of human GFAP

经过测试的应用: ELISA, IHC

推荐稀释比: IHC: 25-100; ELISA: 5000-10000

种属反应性: Rabbit

克隆性: Rabbit Polyclonal

亚型: Immunogen-specific rabbit IgG

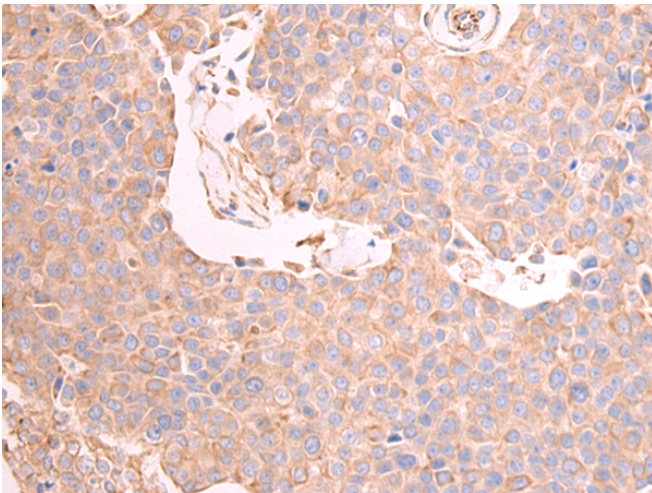
纯化: Antigen affinity purification

种属反应性: Human, Mouse, Rat


成分: PBS (without Mg²⁺ and Ca²⁺), pH 7.4, 150 mM NaCl, 0.05% Sodium Azide and 40% glycerol

研究领域: Signal Transduction, Neuroscience, Stem Cells, Cell Markers

储存和运输: Store at -20°C. Avoid repeated freezing and thawing



Immunohistochemistry analysis of paraffin-embedded Human breast cancer tissue using 210337(GFAP Antibody) at a dilution of 1/25(Cytoplasm).

 Immunohistochemistry analysis of paraffin-embedded Human esophagus cancer tissue using 210337(Anti-GFAP Antibody) at a dilution of 1/25.