

GFAP RABBIT PAB

货号: S221292

产品全名: GFAP 兔多抗

基因符号: ALXDRD

UNIPROT ID: P14136 (Gene Accession - NP_002046)

背景: This gene encodes one of the major intermediate filament proteins of mature astrocytes. It is used as a marker to distinguish astrocytes from other glial cells during development. Mutations in this gene cause Alexander disease, a rare disorder of astrocytes in the central nervous system. Alternative splicing results in multiple transcript variants encoding distinct isoforms.

抗原: Synthetic peptide of human GFAP

经过测试的应用: ELISA, WB, IHC

推荐稀释比: IHC: 50-200;WB: 1000-5000;ELISA: 5000-10000

种属反应性: Rabbit

克隆性: Rabbit Polyclonal

亚型: Immunogen-specific rabbit IgG

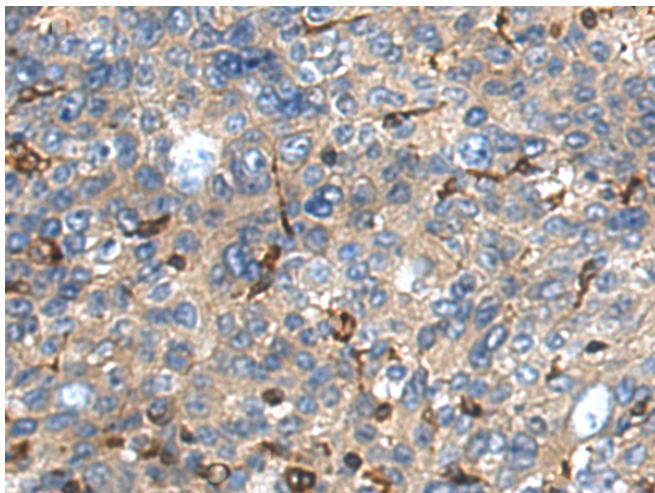
纯化: Antigen affinity purification

种属反应性: Human, Mouse, Rat

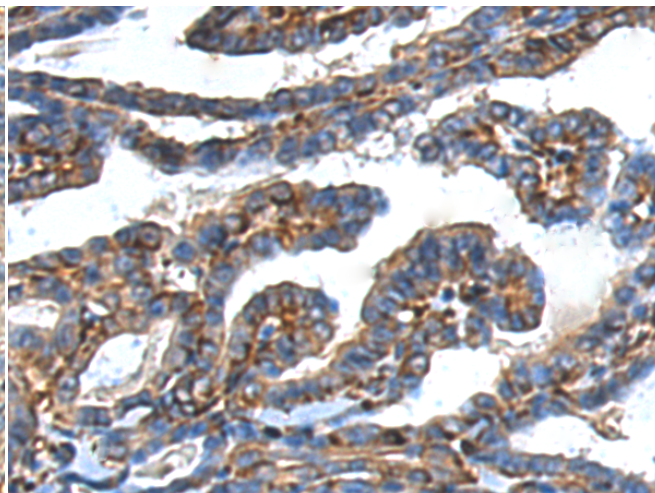
成分: PBS (without Mg²⁺ and Ca²⁺), pH 7.4, 150 mM NaCl, 0.05% Sodium Azide and 40% glycerol

研究领域: Signal Transduction, Neuroscience, Stem Cells, Cell Markers

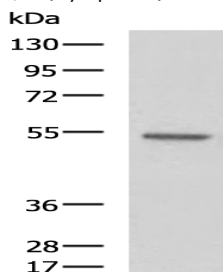
储存和运输: Store at -20°C. Avoid repeated freezing and thawing



Immunohistochemistry analysis of paraffin-embedded Human liver cancer tissue using 221292(GFAP Antibody) at a dilution of 1/35(Cytoplasm).



Immunohistochemistry analysis of paraffin-embedded Human bladder cancer tissue using 221292(Anti-GFAP Antibody) at a dilution of 1/35.



Gel: 8%SDS-PAGE, Lysate: 40 µg;

Lane: U251 cell lysate;

Primary antibody: 221292(GFAP Antibody) at dilution 1/2000;

Secondary antibody: HRP-conjugated Goat anti rabbit IgG at 1/5000 dilution;

Exposure time: 5 seconds