

## GELSOLIN RABBIT MAB

货号: N262268

产品全名: Gelsolin 兔单克隆抗体

基因符号 ADF; AGEL; Brevin; Gelsolin; Gsn

**UNIPROT ID:** P06396

背景: Calcium-regulated, actin-modulating protein that binds to the plus (or barbed) ends of actin monomers or filaments, preventing monomer exchange (end-blocking or capping). It can promote the assembly of monomers into filaments (nucleation) as well as sever filaments already formed. Plays a role in ciliogenesis.

抗原: A synthetic peptide of human Gelsolin

经过测试的应用: WB,IHC-F,IHC-P,ICC/IF

推荐稀释比: WB: 1/500-1/1000 IHC: 1/50-1/100 IF: 1/50-1/200

种属反应性: Rabbit

克隆性: Rabbit Monoclonal

克隆编号: R06-4B4

分子量: Calculated MW: 86 kDa; Observed MW: 86 kDa

亚型: IgG

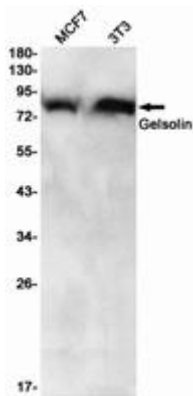
纯化: Affinity Purified

种属反应性: Human,Mouse

成分: PBS (without Mg<sup>2+</sup> and Ca<sup>2+</sup>), pH 7.3 containing 50% glycerol, 0.5% BSA and 0.02% sodium azide

研究领域: Signal Transduction

储存和运输: Store at -20°C. Avoid repeated freezing and thawing



Western blot analysis of Gelsolin in MCF-7, 3T3 lysates using Gelsolin antibody.



# Product Description

Pioneering GTPase and Oncogene Product Development since 2010

---