

GDF6 RABBIT PAB

货号: N225076

产品全名: GDF6 兔多抗

基因符号 GDF6; GDF16; Growth/differentiation factor 6; GDF-6;
Growth/differentiation factor 16

UNIPROT ID: Q6KF10

背景: Growth factor that controls proliferation and cellular differentiation in the retina and bone formation.

抗原: The antiserum was produced against synthesized peptide derived from the Internal region of human GDF6. AA range:311-360

经过测试的应用: WB,ELISA

推荐稀释比: WB: 1/500-1/1000 ELISA: 1/10000

种属反应性: Rabbit

克隆性: Rabbit Polyclonal

分子量: Calculated MW: 51 kDa; Observed MW: 51 kDa

亚型: IgG

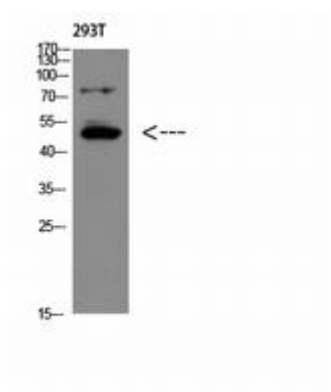
纯化: Affinity Purified

种属反应性: Human, Mouse and Rat

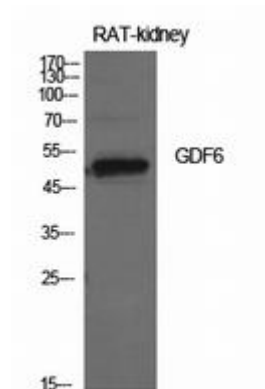
成分: PBS (without Mg²⁺ and Ca²⁺), pH 7.3 containing 50% glycerol, 0.5% BSA and 0.02% sodium azide

研究领域: Signal Transduction

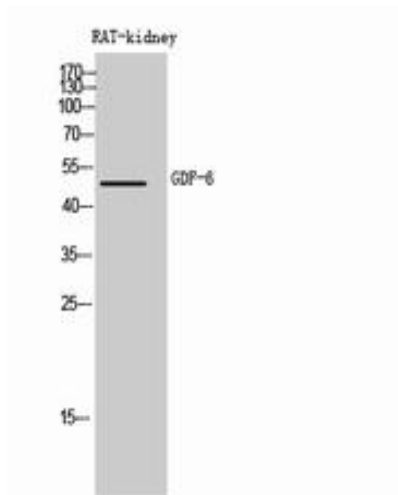
储存和运输: Store at -20°C. Avoid repeated freezing and thawing



Western blot analysis of GDF6 in 293T lysates using GDF6 antibody.



Western blot analysis of GDF6 in rat kidney lysates using GDF6 antibody.



Western blot analysis of GDF6 in rat kidney lysates using GDF6 antibody.