

GCKR RABBIT PAB

货号: S220574

产品全名: GCKR 兔多抗

基因符号: GKR; FGQTL5

UNIPROT ID: Q14397 (Gene Accession - NP_001477)

背景: This gene encodes a protein belonging to the GCKR subfamily of the SIS (Sugar Isomerase) family of proteins. The gene product is a regulatory protein that inhibits glucokinase in liver and pancreatic islet cells by binding non-covalently to form an inactive complex with the enzyme. This gene is considered a susceptibility gene candidate for a form of maturity-onset diabetes of the young (MODY).

抗原: Synthetic peptide of human GCKR

经过测试的应用: ELISA, IHC

推荐稀释比: IHC: 25-100; ELISA: 1000-2000

种属反应性: Rabbit

克隆性: Rabbit Polyclonal

亚型: Immunogen-specific rabbit IgG

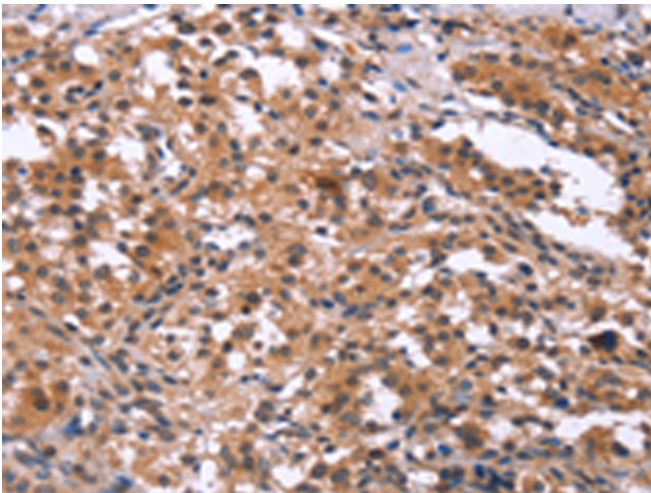
纯化: Antigen affinity purification

种属反应性: Human, Mouse, Rat

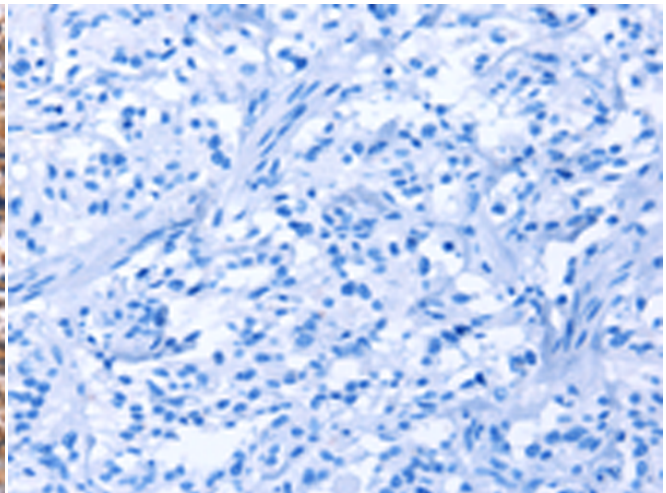
成分: PBS (without Mg²⁺ and Ca²⁺), pH 7.4, 150 mM NaCl, 0.05% Sodium Azide and 40% glycerol

研究领域: Metabolism, Cancer, Cardiovascular

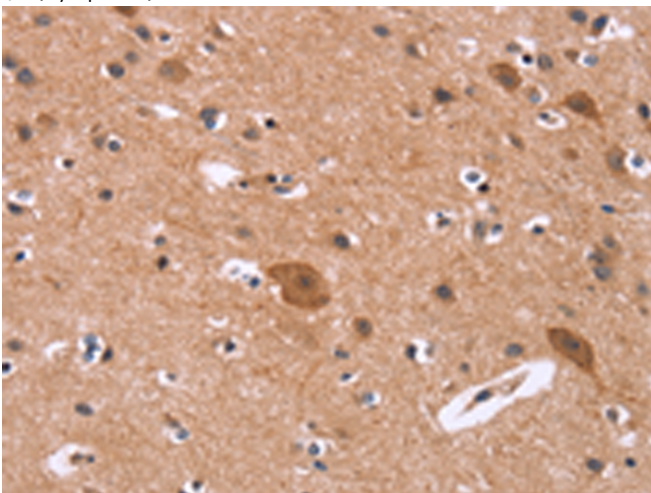
储存和运输: Store at -20°C. Avoid repeated freezing and thawing



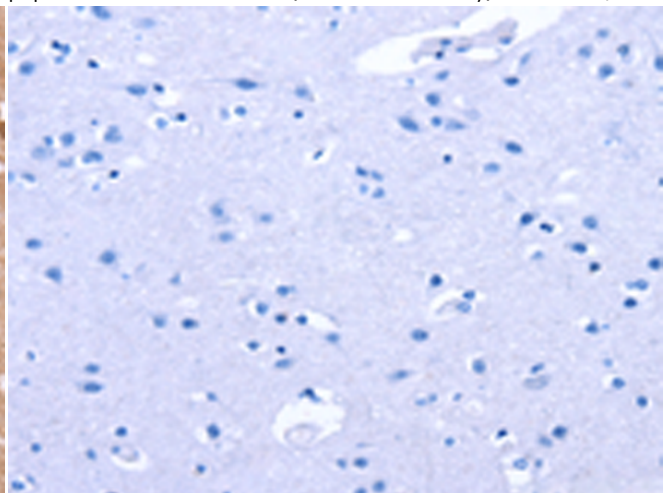
Immunohistochemistry analysis of paraffin embedded Human thyroid cancer tissue using 220574(GCKR Antibody) at a dilution of 1/15(Cytoplasm).



In comparison with the IHC on the left, the same paraffin-embedded Human thyroid cancer tissue is first treated with the synthetic peptide and then with 220574(Anti-GCKR Antibody) at dilution 1/15.



The image on the left is immunohistochemistry of paraffin-embedded Human brain tissue using 220574(Anti-GCKR Antibody) at a dilution of 1/15.



In comparison with the IHC on the left, the same paraffin-embedded Human brain tissue is first treated with synthetic peptide and then with D261712(Anti-GCKR Antibody) at dilution 1/15.



Product Description

Pioneering GTPase and Oncogene Product Development since 2010
