

## GCK RABBIT PAB

货号: S219816

产品全名: GCK 兔多抗

基因符号 GK, GLK, HK4, HHF3, HKIV, HXKP, LGLK, MODY2, FGQTL3

**UNIPROT ID:** P35557 (Gene Accession - NP\_000153)

**背景:** Hexokinases phosphorylate glucose to produce glucose-6-phosphate, the first step in most glucose metabolism pathways. Alternative splicing of this gene results in three tissue-specific forms of glucokinase, one found in pancreatic islet beta cells and two found in liver. The protein localizes to the outer membrane of mitochondria. In contrast to other forms of hexokinase, this enzyme is not inhibited by its product glucose-6-phosphate but remains active while glucose is abundant. Mutations in this gene have been associated with non-insulin dependent diabetes mellitus (NIDDM), maturity onset diabetes of the young, type 2 (MODY2) and persistent hyperinsulinemic hypoglycemia of infancy (PHHI).

**抗原:** Synthetic peptide of human GCK

**经过测试的应用:** ELISA, IHC

**推荐稀释比:** IHC: Oct-50; ELISA: 1000-2000

**种属反应性:** Rabbit

**克隆性:** Rabbit Polyclonal

**亚型:** Immunogen-specific rabbit IgG

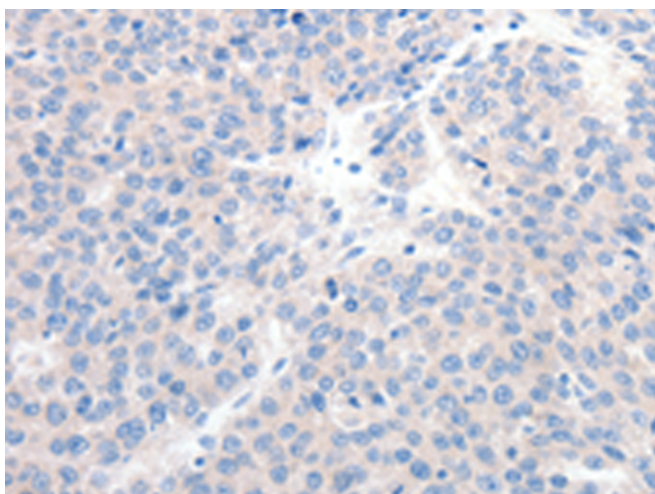
**纯化:** Antigen affinity purification

**种属反应性:** Human, Mouse, Rat

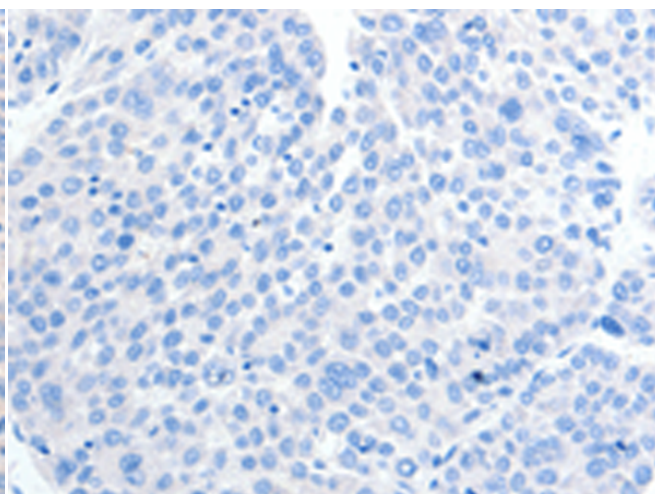
**成分:** PBS (without Mg<sup>2+</sup> and Ca<sup>2+</sup>), pH 7.4, 150 mM NaCl, 0.05% Sodium Azide and 40% glycerol

**研究领域:** Metabolism, Cancer

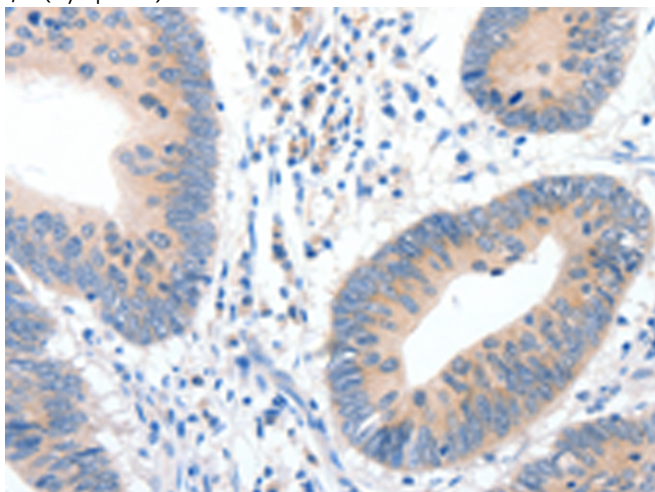
**储存和运输:** Store at -20°C. Avoid repeated freezing and thawing



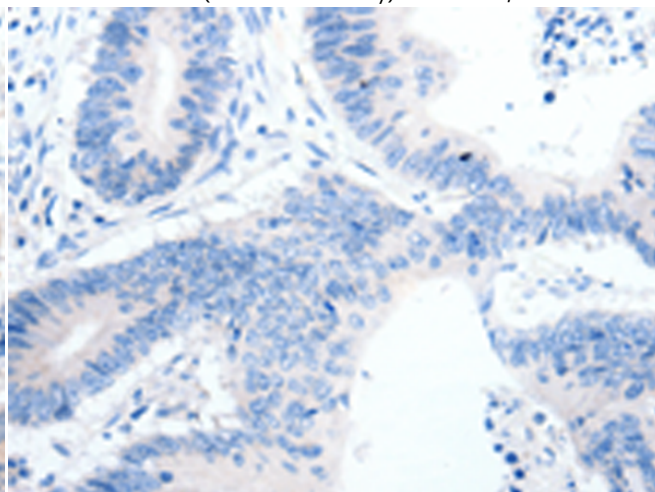
Immunohistochemistry analysis of paraffin embedded Human liver cancer tissue using 219816(GCK Antibody) at a dilution of 1/20(Cytoplasm).



In comparison with the IHC on the left, the same paraffin-embedded Human liver cancer tissue is first treated with the synthetic peptide and then with 219816(Anti-GCK Antibody) at dilution 1/20.



The image on the left is immunohistochemistry of paraffin-embedded Human colon cancer tissue using 219816(Anti-GCK Antibody) at a dilution of 1/20.



In comparison with the IHC on the left, the same paraffin-embedded Human colon cancer tissue is first treated with synthetic peptide and then with D260416(Anti-GCK Antibody) at dilution 1/20.

