

## GCK RABBIT PAB

货号: S217471

产品全名: GCK 兔多抗

基因符号: GK; GLK; HK4; HHF3; HKIV; HXKP; LGLK; MODY2; FGQTL3

**UNIPROT ID:** P35557 (Gene Accession - BC001890)

**背景:** Hexokinases phosphorylate glucose to produce glucose-6-phosphate, the first step in most glucose metabolism pathways. Alternative splicing of this gene results in three tissue-specific forms of glucokinase, one found in pancreatic islet beta cells and two found in liver. The protein localizes to the outer membrane of mitochondria. In contrast to other forms of hexokinase, this enzyme is not inhibited by its product glucose-6-phosphate but remains active while glucose is abundant. Mutations in this gene have been associated with non-insulin dependent diabetes mellitus (NIDDM), maturity onset diabetes of the young, type 2 (MODY2) and persistent hyperinsulinemic hypoglycemia of infancy (PHHI).

**抗原:** Fusion protein of human GCK

**经过测试的应用:** ELISA, IHC

**推荐稀释比:** IHC: 100-300; ELISA: 2000-10000

**种属反应性:** Rabbit

**克隆性:** Rabbit Polyclonal

**亚型:** Immunogen-specific rabbit IgG

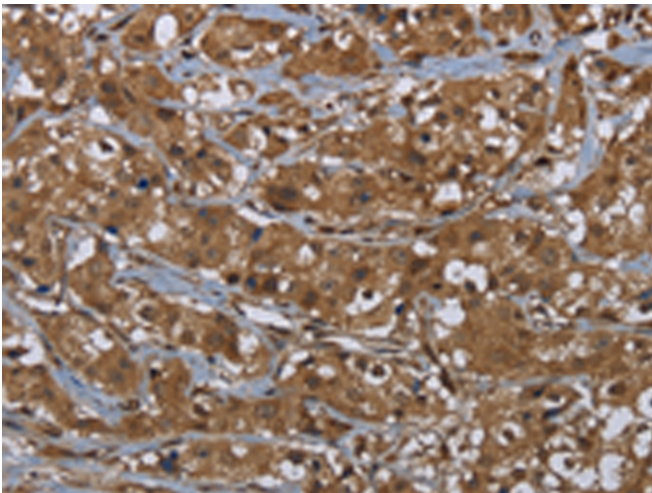
**纯化:** Antigen affinity purification

**种属反应性:** Human, Mouse, Rat

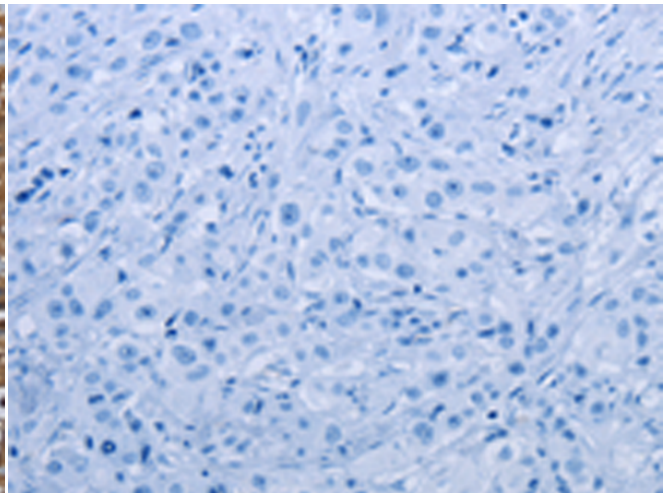
**成分:** PBS (without Mg<sup>2+</sup> and Ca<sup>2+</sup>), pH 7.4, 150 mM NaCl, 0.05% Sodium Azide and 40% glycerol

**研究领域:** Metabolism, Cancer

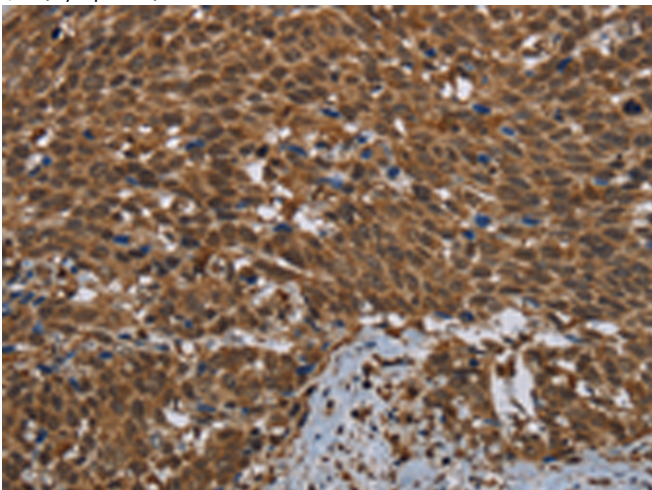
**储存和运输:** Store at -20°C. Avoid repeated freezing and thawing



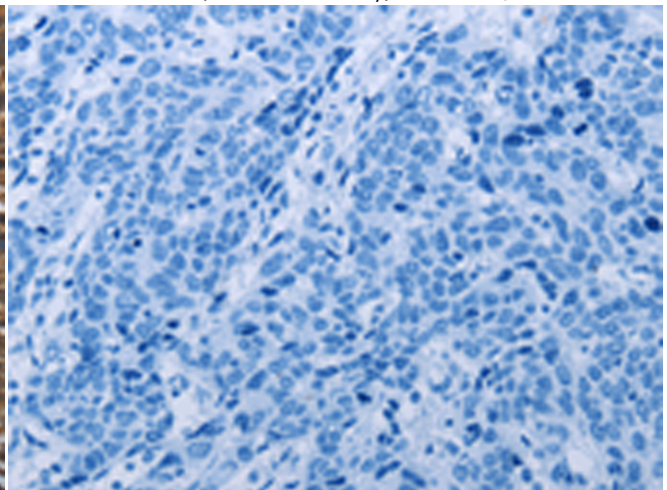
Immunohistochemistry analysis of paraffin embedded Human breast cancer tissue using 217471(GCK Antibody) at a dilution of 1/60(Cytoplasm).



In comparison with the IHC on the left, the same paraffin-embedded Human breast cancer tissue is first treated with the fusion protein and then with 217471(Anti-GCK Antibody) at dilution 1/60.



The image on the left is immunohistochemistry of paraffin-embedded Human cervical cancer tissue using 217471(Anti-GCK Antibody) at a dilution of 1/60.



In comparison with the IHC on the left, the same paraffin-embedded Human cervical cancer tissue is first treated with fusion protein and then with D222410(Anti-GCK Antibody) at dilution 1/60.

