

GCH1 RABBIT PAB

货号: S219841

产品全名: GCH1 兔多抗

基因符号 GCH, DYT5, DYT14, DYT5a, GTPCH1, HPABH4B, GTP-CH-1

UNIPROT ID: P30793 (Gene Accession - NP_001019242)

背景: This gene encodes a member of the GTP cyclohydrolase family. The encoded protein is the first and rate-limiting enzyme in tetrahydrobiopterin (BH4) biosynthesis, catalyzing the conversion of GTP into 7,8-dihydroneopterin triphosphate. BH4 is an essential cofactor required by aromatic amino acid hydroxylases as well as nitric oxide synthases. Mutations in this gene are associated with malignant hyperphenylalaninemia and dopa-responsive dystonia. Several alternatively spliced transcript variants encoding different isoforms have been described; however, not all variants give rise to a functional enzyme.

抗原: Synthetic peptide of human GCH1

经过测试的应用: ELISA, WB, IHC

推荐稀释比: IHC: 20-May;WB: 500-2000;ELISA: 1000-5000

种属反应性: Rabbit

克隆性: Rabbit Polyclonal

亚型: Immunogen-specific rabbit IgG

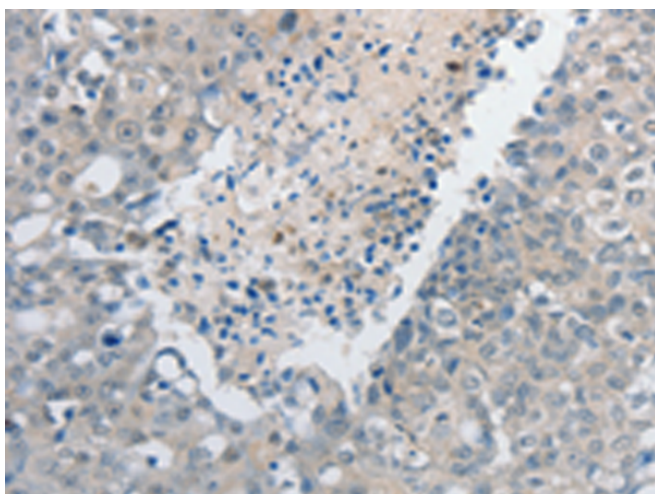
纯化: Antigen affinity purification

种属反应性: Human

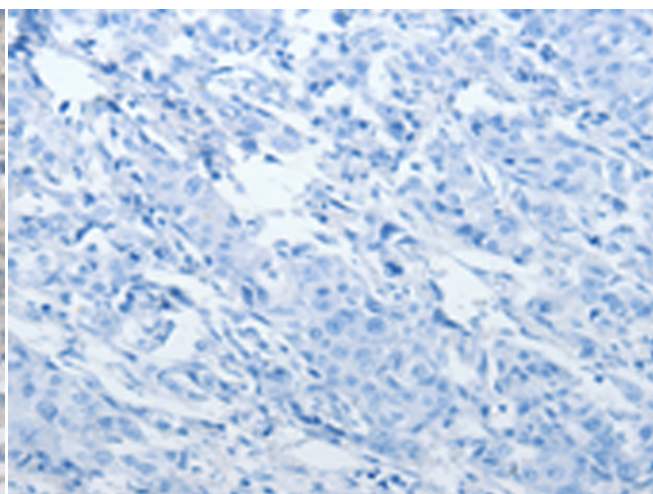
成分: PBS (without Mg²⁺ and Ca²⁺), pH 7.4, 150 mM NaCl, 0.05% Sodium Azide and 40% glycerol

研究领域: Metabolism, Signal Transduction, Cell Biology, Neuroscience

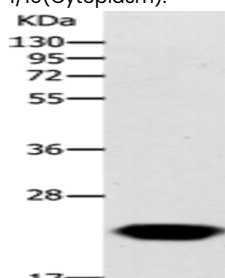
储存和运输: Store at -20°C. Avoid repeated freezing and thawing



Immunohistochemistry analysis of paraffin embedded Human breast cancer tissue using 219841(GCH1 Antibody) at a dilution of 1/15(Cytoplasm).



In comparison with the IHC on the left, the same paraffin-embedded Human breast cancer tissue is first treated with the synthetic peptide and then with 219841(Anti-GCH1 Antibody) at dilution 1/15.



Gel: 12%SDS-PAGE, Lysate: 60 µg;

Lane: Human fetal liver tissue;

Primary antibody: 219841(GCH1 Antibody) at dilution 1/200;

Secondary antibody: Goat anti rabbit IgG at 1/8000 dilution;

Exposure time: 15 seconds