

GC1Q R RABBIT MAB

货号: N261940

产品全名: GC1q R 兔单克隆抗体

基因符号 C1QBP; GC1QBP; HABP1; SF2P32; Complement component 1 Q subcomponent-binding protein; mitochondrial; GC1q-R protein; Glycoprotein gC1qBP; C1qBP; Hyaluronan-binding protein 1; Mitochondrial matrix protein p32; p33

UNIPROT ID: Q07021

背景: Binds to the globular "heads" of C1Q thus inhibiting C1 activation.

抗原: A synthetic peptide of human C1QBP

经过测试的应用: WB,IP

推荐稀释比: WB: 1/500-1/1000 IP: 1/20

种属反应性: Rabbit

克隆性: Rabbit Monoclonal

克隆编号: R08-5F6

分子量: Calculated MW: 31 kDa; Observed MW: 31 kDa

亚型: IgG

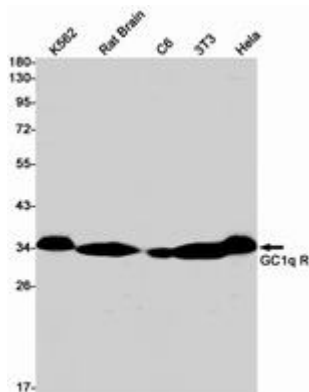
纯化: Affinity Purified

种属反应性: Human, Mouse and Rat

成分: PBS (without Mg²⁺ and Ca²⁺), pH 7.3 containing 50% glycerol, 0.5% BSA and 0.02% sodium azide

研究领域: Epigenetics and Nuclear Signaling

储存和运输: Store at -20°C. Avoid repeated freezing and thawing



Western blot analysis of GC1q R in K562, rat Brain, C6, 3T3, HeLa lysates using GC1q R antibody.



Product Description

Pioneering GTPase and Oncogene Product Development since 2010
