

## GC1Q R RABBIT MAB

货号: N263343

产品全名: GC1q R 兔单克隆抗体

基因符号 C1QBP; GC1QBP; HABP1; SF2P32; Complement component 1 Q subcomponent-binding protein; mitochondrial; GC1q-R protein; Glycoprotein gC1qBP; C1qBP; Hyaluronan-binding protein 1; Mitochondrial matrix protein p32; p33

**UNIPROT ID:** Q07021

背景: Binds to the globular "heads" of C1q thus inhibiting C1 activation.

抗原: Recombinant protein of human GC1q R

经过测试的应用: WB, ICC/IF

推荐稀释比: WB: 1/500-1/1000 IF: 1/50-1/200

种属反应性: Rabbit

克隆性: Rabbit Monoclonal

克隆编号: R04-8F2

分子量: Calculated MW: 31 kDa; Observed MW: 31 kDa

亚型: IgG

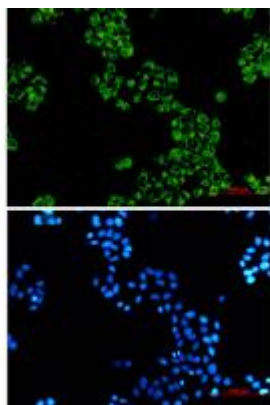
纯化: Affinity Purified

种属反应性: Human

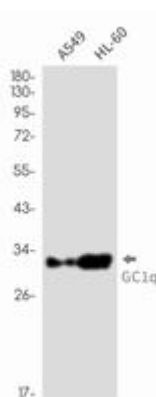
成分: PBS (without Mg<sup>2+</sup> and Ca<sup>2+</sup>), pH 7.3 containing 50% glycerol, 0.5% BSA and 0.02% sodium azide

研究领域: Epigenetics and Nuclear Signaling

储存和运输: Store at -20°C. Avoid repeated freezing and thawing



Immunocytochemistry analysis of GC1q R (green) in hela using GC1q R antibody, and DAPI (blue)



Western blot analysis of GC1q R in A549, HL-60 lysates using GC1q R antibody.



# Product Description

Pioneering GTPase and Oncogene Product Development since 2010

---