

GBA3 RABBIT PAB

货号: S219435

产品全名: GBA3 兔多抗

基因符号: CBG; GLUC; KLRP; CBGL1

UNIPROT ID: Q9H227 (Gene Accession - BC029362)

背景: The protein encoded by this gene is an enzyme that can hydrolyze several types of glycosides. This gene is a polymorphic pseudogene, with the most common allele being the functional allele that encodes the full-length protein. Some individuals, as represented by the reference genome allele, contain a single nucleotide polymorphism that results in a premature stop codon in the coding region, and therefore this allele is pseudogenetic due to the failure to produce a functional full-length protein. Alternative splicing of this gene results in multiple transcript variants.

抗原: Fusion protein of human GBA3

经过测试的应用: ELISA, WB, IHC

推荐稀释比: IHC: 150-300;WB: 500-2000;ELISA: 5000-10000

种属反应性: Rabbit

克隆性: Rabbit Polyclonal

亚型: Immunogen-specific rabbit IgG

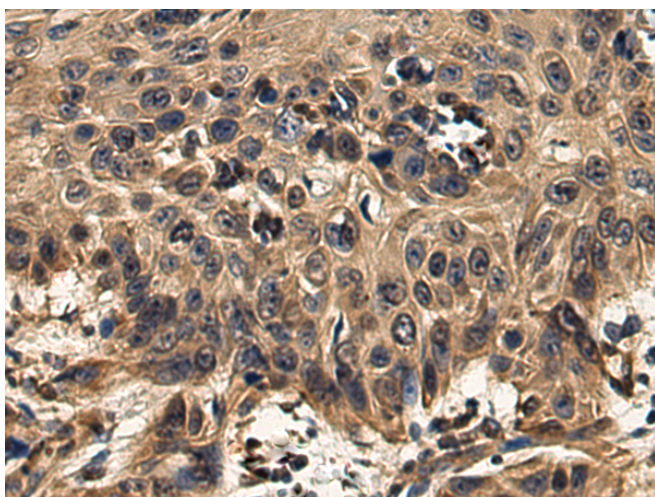
纯化: Antigen affinity purification

种属反应性: Human

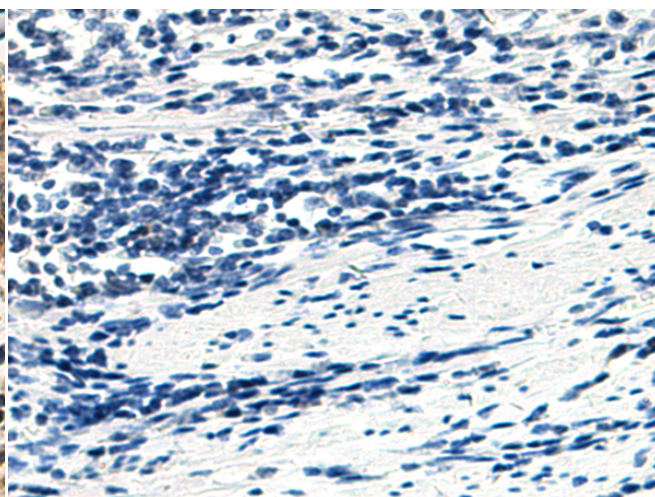
成分: PBS (without Mg²⁺ and Ca²⁺), pH 7.4, 150 mM NaCl, 0.05% Sodium Azide and 40% glycerol

研究领域: Metabolism

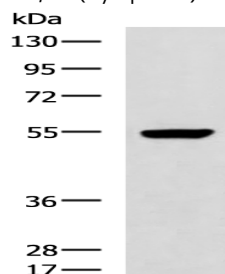
储存和运输: Store at -20°C. Avoid repeated freezing and thawing



Immunohistochemistry analysis of paraffin embedded Human esophagus cancer tissue using 219435(GBA3 Antibody) at a dilution of 1/160(Cytoplasm).



In comparison with the IHC on the left, the same paraffin-embedded Human esophagus cancer tissue is first treated with the fusion protein and then with 219435(Anti-GBA3 Antibody) at dilution 1/160.



Gel: 8%SDS-PAGE, Lysate: 40 µg;

Lane: LOVO cell lysate;

Primary antibody: 219435(GBA3 Antibody) at dilution 1/1000;

Secondary antibody: HRP-conjugated Goat anti rabbit IgG at 1/5000 dilution;

Exposure time: 1 minute