

## GAZ PAB

### $G\alpha_z$ Polyclonal Antibody

**Cat. #:** 21016

**Gene Symbol:** GNAZ

**Description:** Anti- $G\alpha_z$  Rabbit Polyclonal Antibody

**Background:** Heterotrimeric G proteins are critical cellular signal transducers.  $G\alpha_z$  belongs to the  $G_i$  sub-family of G proteins that could mediate the inhibition of adenylyl cyclases. Other biochemical and physiological functions of  $G\alpha_z$  proteins are being explored.

**Immunogen:** Recombinant full length protein of  $G\alpha_z$ .

**Applications:** ELISA, WB, IHC

**Recommended Dilutions:** ELISA 1:100–1:5000; WB 1:100–1:2000

**Concentration:** 1 mg/ml

**Host Species:** Rabbit

**Format:** Liquid

**Clonality:** Polyclonal

**Isotype:** IgG

**Purity:** Purified from serum

**Preservative:** No

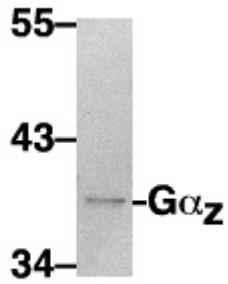
**Constituents:** PBS (without  $Mg^{2+}$  and  $Ca^{2+}$ ), pH 7.4, 150 mM NaCl, 50% glycerol

**Species Reactivity:**  $G\alpha_z$  antibody recognizes  $G\alpha_z$  of vertebrates.

**Storage Conditions:** Store at  $-20^{\circ}C$ . Avoid repeated freezing and thawing

## Western blot:

kDa



## WB: anti-G $\alpha_z$ pAb

Western blot analysis of G $_z$  proteins. HEK-293 whole-cell lysate was used for western blots.