

GATD3B RABBIT PAB

货号: S218408

产品全名: GATD3B 兔多抗

基因符号: KNP-1

UNIPROT ID: A0A0B4J2D5 (Gene Accession - BC003587)

背景: May play a role in promoting mitochondrial enlargement in cone photoreceptor cells.

抗原: Fusion protein of human GATD3B

经过测试的应用: ELISA, WB, IHC

推荐稀释比: IHC: 30-150;WB: 500-2000;ELISA: 5000-10000

种属反应性: Rabbit

克隆性: Rabbit Polyclonal

亚型: Immunogen-specific rabbit IgG

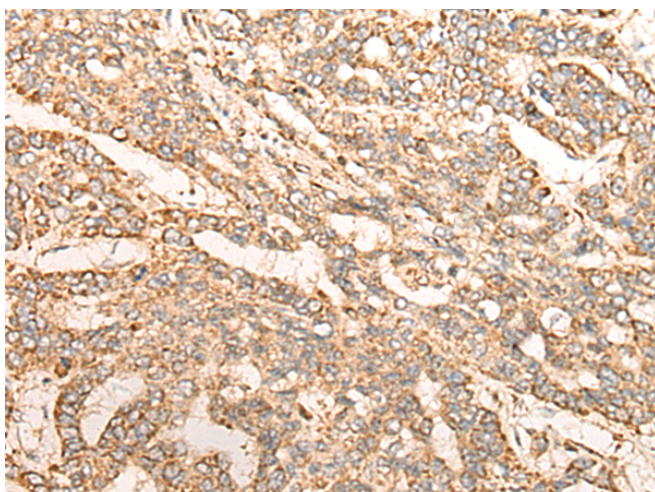
纯化: Antigen affinity purification

种属反应性: Human

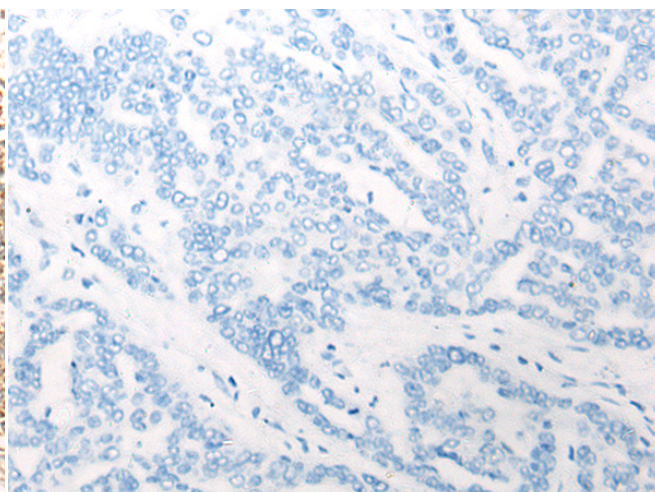
成分: PBS (without Mg²⁺ and Ca²⁺), pH 7.4, 150 mM NaCl, 0.05% Sodium Azide and 40% glycerol

研究领域: Cell Biology

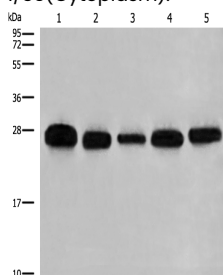
储存和运输: Store at -20°C. Avoid repeated freezing and thawing



Immunohistochemistry analysis of paraffin embedded Human liver cancer tissue using 218408(GATD3B Antibody) at a dilution of 1/35(Cytoplasm).



In comparison with the IHC on the left, the same paraffin-embedded Human liver cancer tissue is first treated with the fusion protein and then with 218408(Anti-GATD3B Antibody) at dilution 1/35.



Gel: 12%SDS-PAGE, Lysate: 40 µg;

Lane 1-5: 293T, A549, HeLa, K562 and HEPG2 cell lysates;

Primary antibody: 218408(GATD3B Antibody) at dilution 1/400;

Secondary antibody: Goat anti rabbit IgG at 1/8000 dilution;

Exposure time: 1 second