

GATA1 RABBIT PAB

货号: S221423

产品全名: GATA1 兔多抗

基因符号: GFI; GF-1; NFE1; XLTT; ERYF1; NF-E1; XLANP; XLTDA; GATA-1

UNIPROT ID: P15976 (Gene Accession - NP_002040)

背景: This gene encodes a protein which belongs to the GATA family of transcription factors. The protein plays an important role in erythroid development by regulating the switch of fetal hemoglobin to adult hemoglobin. Mutations in this gene have been associated with X-linked dyserythropoietic anemia and thrombocytopenia.

抗原: Synthetic peptide of human GATA1

经过测试的应用: ELISA, IHC

推荐稀释比: IHC: 25-100; ELISA: 5000-10000

种属反应性: Rabbit

克隆性: Rabbit Polyclonal

亚型: Immunogen-specific rabbit IgG

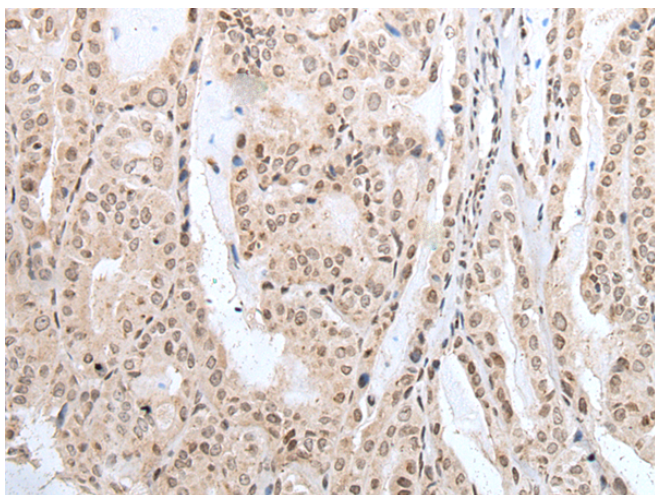
纯化: Antigen affinity purification

种属反应性: Human, Mouse, Rat

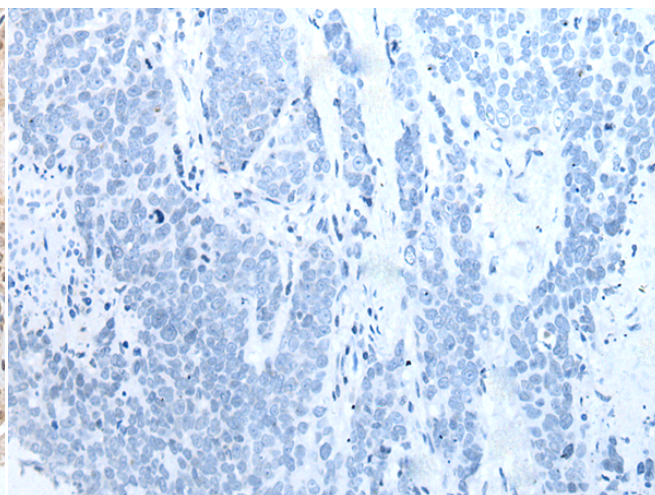
成分: PBS (without Mg²⁺ and Ca²⁺), pH 7.4, 150 mM NaCl, 0.05% Sodium Azide and 40% glycerol

研究领域: Epigenetics and Nuclear Signaling, Stem Cells, Developmental Biology

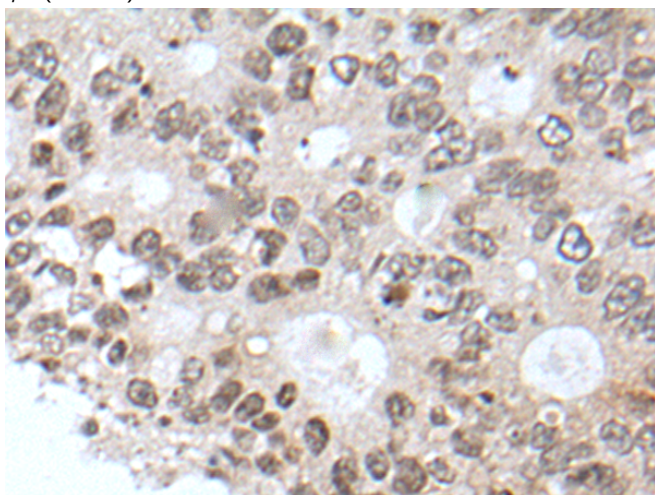
储存和运输: Store at -20°C. Avoid repeated freezing and thawing



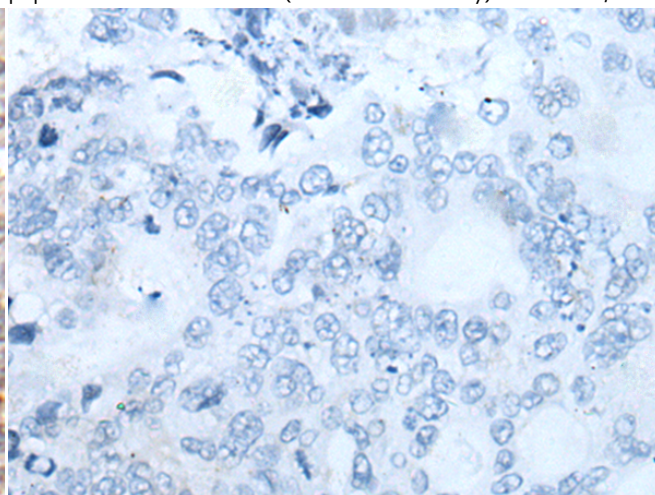
Immunohistochemistry analysis of paraffin embedded Human thyroid cancer tissue using 221423(GATA1 Antibody) at a dilution of 1/30(Nucleus).



In comparison with the IHC on the left, the same paraffin-embedded Human thyroid cancer tissue is first treated with the synthetic peptide and then with 221423(Anti-GATA1 Antibody) at dilution 1/30.



The image on the left is immunohistochemistry of paraffin-embedded Human colorectal cancer tissue using 221423(Anti-GATA1 Antibody) at a dilution of 1/30.



In comparison with the IHC on the left, the same paraffin-embedded Human colorectal cancer tissue is first treated with synthetic peptide and then with D263008(Anti-GATA1 Antibody) at dilution 1/30.



Product Description

Pioneering GTPase and Oncogene Product Development since 2010
