

GATA1 RABBIT MAB

货号: N261558

产品全名: GATA1 兔单克隆抗体

基因符号 GATA1; ERYF1; GF1; Erythroid transcription factor; Eryf1; GATA-binding factor 1; GATA-1; GF-1; NF-E1 DNA-binding 蛋白

UNIPROT ID: P15976

背景: GATA-1 is the founding member of the GATA family and is required for erythroid and megakaryocytic cell development. Mutations in GATA-1 have been linked to many human diseases, including acute megakaryoblastic leukemia in Down syndrome children (DS-AMKL), X-linked thrombocytopenia, and gray platelet syndrome.

抗原: Recombinant protein of human GATA1

经过测试的应用: WB, ICC/IF, IP, ChIP

推荐稀释比: WB: 1/500-1/1000 IF: 1/50-1/200 IP: 1/20 ChIP: 1/20

种属反应性: Rabbit

克隆性: Rabbit Monoclonal

克隆编号: R06-5C3

分子量: Calculated MW: 43 kDa; Observed MW: 43 kDa

亚型: IgG

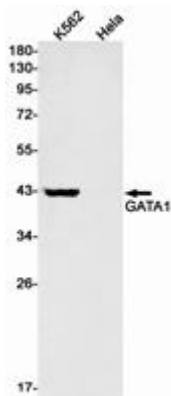
纯化: Affinity Purified

种属反应性: Human

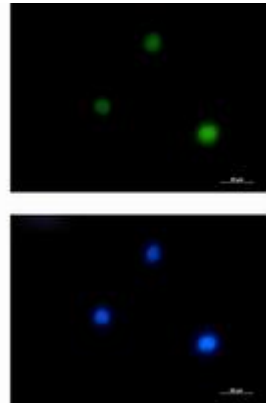
成分: PBS (without Mg²⁺ and Ca²⁺), pH 7.3 containing 50% glycerol, 0.5% BSA and 0.02% sodium azide

研究领域: Epigenetics and Nuclear Signaling

储存和运输: Store at -20°C. Avoid repeated freezing and thawing



Western blot analysis of GATA1 in K562, HeLa lysates using GATA1 antibody.



Immunocytochemistry analysis of GATA1 (green) in K562 using GATA1 antibody, and DAPI (blue).