

## GASK1A RABBIT PAB

货号: S221805

产品全名: GASK1A 兔多抗

基因符号: C3orf41; FAM198A

**UNIPROT ID:** Q9UFPI (Gene Accession - NP\_001123380)

背景: The function of this protein remains unknown.

抗原: Synthetic peptide of human GASK1A

经过测试的应用: ELISA, IHC

推荐稀释比: IHC: 50-200; ELISA: 5000-10000

种属反应性: Rabbit

克隆性: Rabbit Polyclonal

亚型: Immunogen-specific rabbit IgG

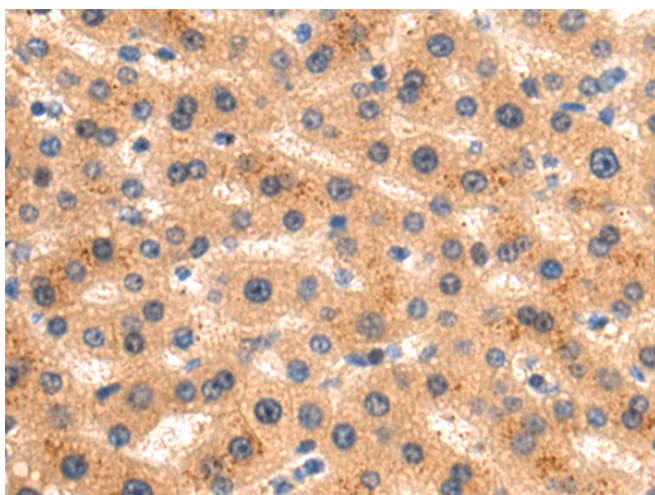
纯化: Antigen affinity purification

种属反应性: Human, Mouse

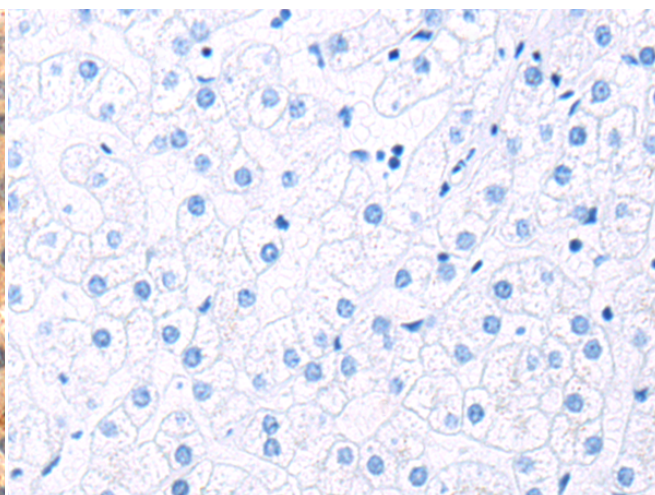
成分: PBS (without Mg<sup>2+</sup> and Ca<sup>2+</sup>), pH 7.4, 150 mM NaCl, 0.05% Sodium Azide and 40% glycerol

研究领域: Cell Biology

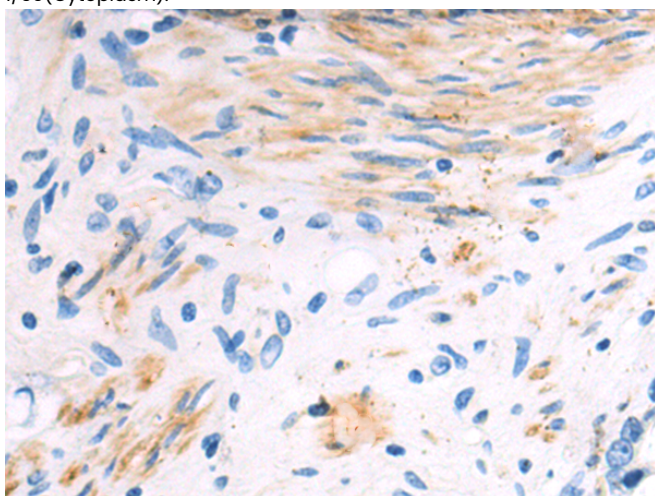
储存和运输: Store at -20°C. Avoid repeated freezing and thawing



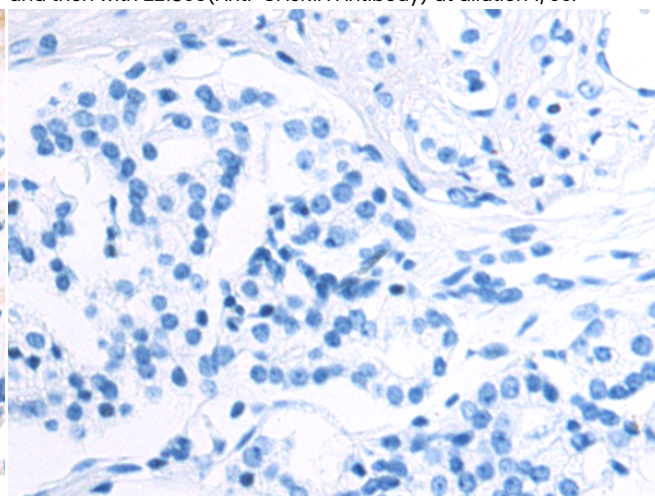
Immunohistochemistry analysis of paraffin embedded Human liver cancer tissue using 221805(GASK1A Antibody) at a dilution of 1/60(Cytoplasm).



In comparison with the IHC on the left, the same paraffin-embedded Human liver cancer tissue is first treated with the synthetic peptide and then with 221805(Anti-GASK1A Antibody) at dilution 1/60.



The image on the left is immunohistochemistry of paraffin-embedded Human prostate cancer tissue using 221805(Anti-GASK1A Antibody) at a dilution of 1/60.



In comparison with the IHC on the left, the same paraffin-embedded Human prostate cancer tissue is first treated with synthetic peptide and then with D263559(Anti-GASK1A Antibody) at dilution 1/60.



# Product Description

Pioneering GTPase and Oncogene Product Development since 2010

---