

GAS2L1 RABBIT PAB

货号: S215189

产品全名: GAS2L1 兔多抗

基因符号: GAR22

UNIPROT ID: Q99501 (Gene Accession - NP_006469)

背景: This gene encodes a member of the growth arrest-specific 2 protein family. This protein binds components of the cytoskeleton and may be involved in mediating interactions between microtubules and microfilaments. Alternate splicing results in multiple transcript variants. A pseudogene of this gene is found on chromosome 9.

抗原: Synthetic peptide of human GAS2L1

经过测试的应用: ELISA, IHC

推荐稀释比: IHC: Oct-50; ELISA: 5000-10000

种属反应性: Rabbit

克隆性: Rabbit Polyclonal

亚型: Immunogen-specific rabbit IgG

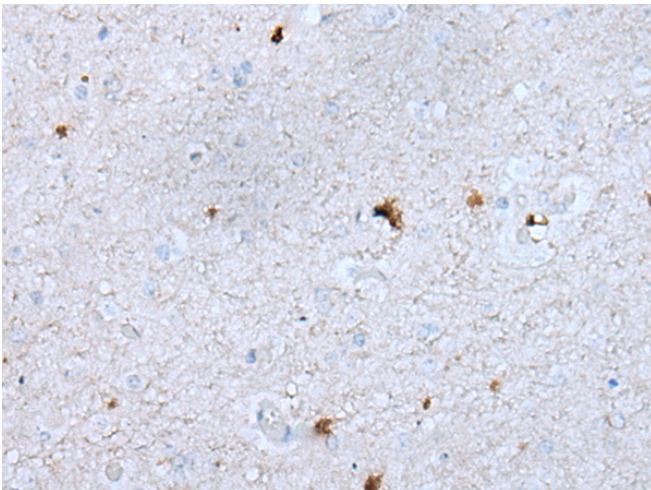
纯化: Antigen affinity purification

种属反应性: Human, Mouse

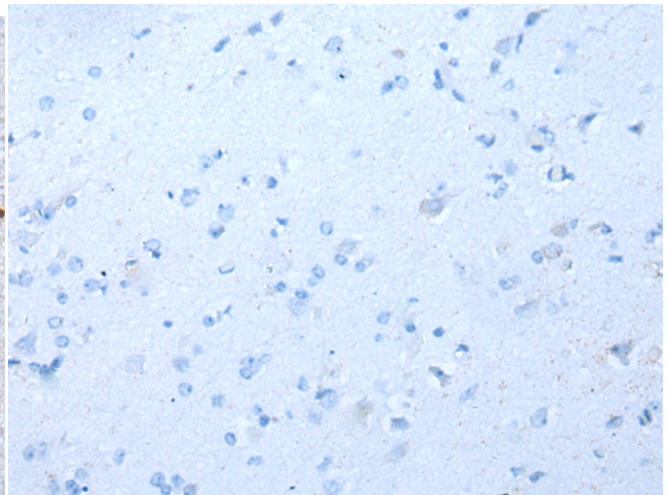
成分: PBS (without Mg²⁺ and Ca²⁺), pH 7.4, 150 mM NaCl, 0.05% Sodium Azide and 40% glycerol

研究领域: Signal Transduction

储存和运输: Store at -20°C. Avoid repeated freezing and thawing



Immunohistochemistry analysis of paraffin embedded Human brain tissue using 215189(GAS2L1 Antibody) at a dilution of 1/30(Cytoplasm).



In comparison with the IHC on the left, the same paraffin-embedded Human brain tissue is first treated with the synthetic peptide and then with 215189(Anti-GAS2L1 Antibody) at dilution 1/30.