

## GAS1 RABBIT PAB

货号: S220565

产品全名: GAS1 兔多抗

基因符号

**UNIPROT ID:** P54826 (Gene Accession - NP\_002039 )

**背景:** Growth arrest-specific 1 plays a role in growth suppression. GAS1 blocks entry to S phase and prevents cycling of normal and transformed cells. Gas1 is a putative tumor suppressor gene.

**抗原:** Synthetic peptide of human GAS1

**经过测试的应用:** ELISA, WB, IHC

**推荐稀释比:** IHC: Oct-50;WB: 200-1000;ELISA: 1000-2000

**种属反应性:** Rabbit

**克隆性:** Rabbit Polyclonal

**亚型:** Immunogen-specific rabbit IgG

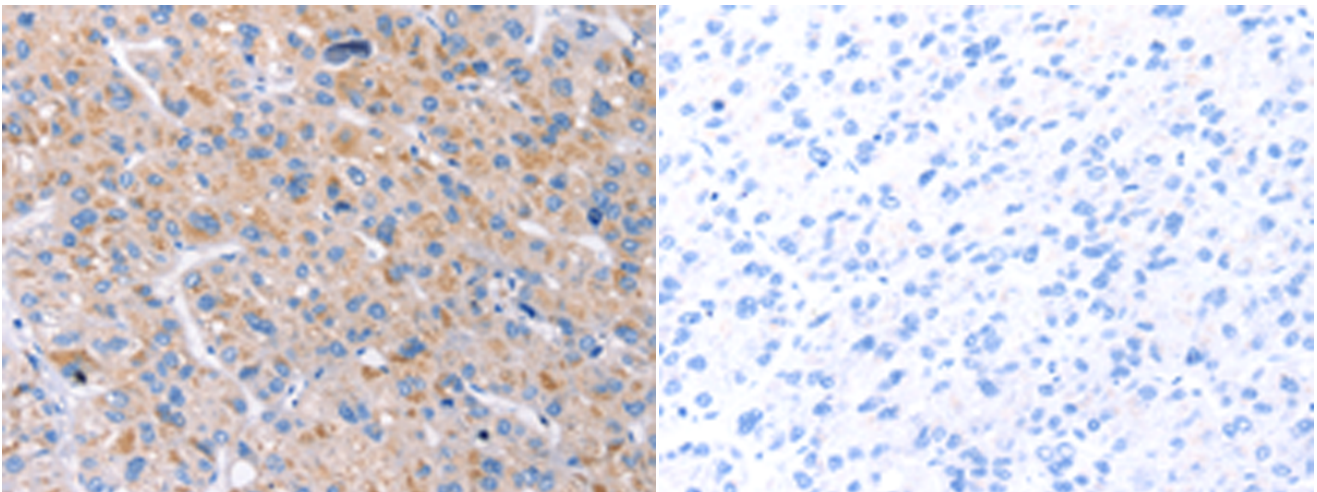
**纯化:** Antigen affinity purification

**种属反应性:** Human

**成分:** PBS (without Mg<sup>2+</sup> and Ca<sup>2+</sup>), pH 7.4, 150 mM NaCl, 0.05% Sodium Azide and 40% glycerol

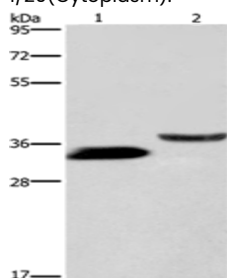
**研究领域:** Cancer, Signal Transduction

**储存和运输:** Store at -20°C. Avoid repeated freezing and thawing



Immunohistochemistry analysis of paraffin embedded Human liver cancer tissue using 220565(GAS1 Antibody) at a dilution of 1/20(Cytoplasm).

In comparison with the IHC on the left, the same paraffin-embedded Human liver cancer tissue is first treated with the synthetic peptide and then with 220565(Anti-GAS1 Antibody) at dilution 1/20.



Gel: 8%SDS-PAGE, Lysate: 40 µg;

Lane 1-2: 293T cells, human kidney tissue;

Primary antibody: 220565(GAS1 Antibody) at dilution 1/100;

Secondary antibody: Goat anti rabbit IgG at 1/8000 dilution;

Exposure time: 3 minutes