

GARNL3 RABBIT PAB

货号: S222065

产品全名: GARNL3 兔多抗

基因符号: bA356B19.1

UNIPROT ID: Q5VVW2 (Gene Accession - NP_115669)

背景: The function of this protein remains unknown.

抗原: Synthetic peptide of human GARNL3

经过测试的应用: ELISA, WB, IHC

推荐稀释比: IHC: 30-150;WB: 500-2000;ELISA: 5000-10000

种属反应性: Rabbit

克隆性: Rabbit Polyclonal

亚型: Immunogen-specific rabbit IgG

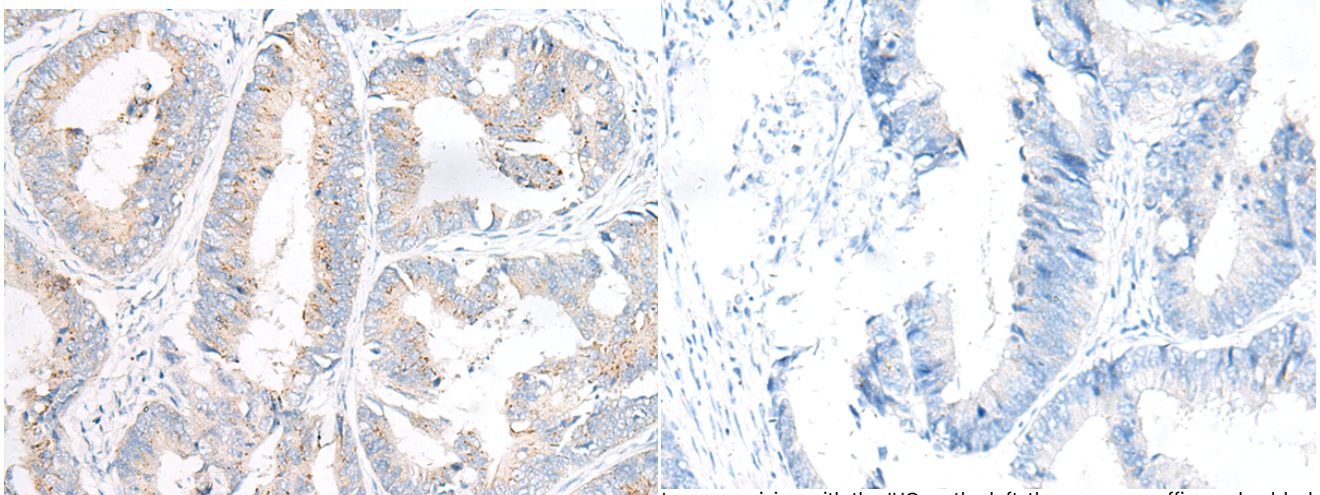
纯化: Antigen affinity purification

种属反应性: Human, Mouse

成分: PBS (without Mg²⁺ and Ca²⁺), pH 7.4, 150 mM NaCl, 0.05% Sodium Azide and 40% glycerol

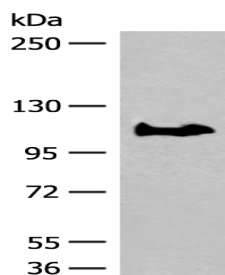
研究领域: Signal Transduction

储存和运输: Store at -20°C. Avoid repeated freezing and thawing



Immunohistochemistry analysis of paraffin embedded Human colorectal cancer tissue using 222065(GARNL3 Antibody) at a dilution of 1/100(Cell membrane).

In comparison with the IHC on the left, the same paraffin-embedded Human colorectal cancer tissue is first treated with the synthetic peptide and then with 222065(Anti-GARNL3 Antibody) at dilution 1/100.



Gel: 6%SDS-PAGE, Lysate: 40 µg;

Lane: PC-3 cell lysate;

Primary antibody: 222065(GARNL3 Antibody) at dilution 1/400;

Secondary antibody: Goat anti rabbit IgG at 1/8000 dilution;

Exposure time: 1 minute