

GAMMA TUBULIN RABBIT PAB

货号: N225610

产品全名: gamma Tubulin 兔多抗

基因符号 TUBG1; TUBG; Tubulin gamma-1 chain; Gamma-1-tubulin;
Gamma-tubulin complex component 1; GCP-1

UNIPROT ID: P23258

背景: TUBG1 Tubulin is the major constituent of microtubules. Gamma tubulin is found at microtubule organizing centers (MTOC) such as the spindle poles or the centrosome. Pericentriolar matrix component that regulates alpha/beta tubulin minus-end nucleation, centrosome duplication and spindle formation. Interacts with GCP2 and GCP3. Interacts with B9D2. Interacts with CDK5RAP2;

抗原: A synthesized peptide derived from human Tubulin gamma

经过测试的应用: WB,IHC-P,ICC/IF,IP,FC

推荐稀释比: WB: 1/500-1/1000 IHC: 1/50-1/100 IF: 1/50-1/200 IP: 1/20 FC:
1/50-1/100

种属反应性: Rabbit

克隆性: Rabbit Polyclonal

分子量: Calculated MW: 51 kDa; Observed MW: 48 kDa

亚型: IgG

纯化: Affinity Chromatography

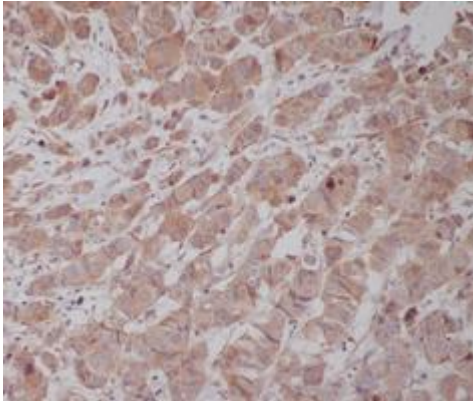
种属反应性: Human, Mouse and

Rat,Monkey,Chicken,Hamster,Cow,Dog,Fish,Xenopus,Tropicalis

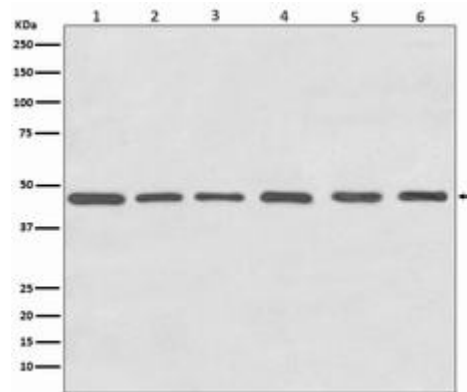
成分: PBS (without Mg²⁺ and Ca²⁺), pH 7.3 containing 50% glycerol,
0.5% BSA and 0.02% sodium azide

研究领域: Signal Transduction

储存和运输: Store at -20°C. Avoid repeated freezing and thawing



Immunohistochemistry analysis of paraffin-embedded Human breast cancer using Tubulin gamma antibody. High-pressure and temperature Sodium Citrate pH 6.0 was used for antigen retrieval.



Western blot analysis of Tubulin gamma in (1) HeLa lysates; (2) NIH 3T3 lysates; (3) C6 lysates; (4) Zebrafish lysates; (5) COS1 lysates; (6) MDCK lysates using gamma Tubulin antibody.